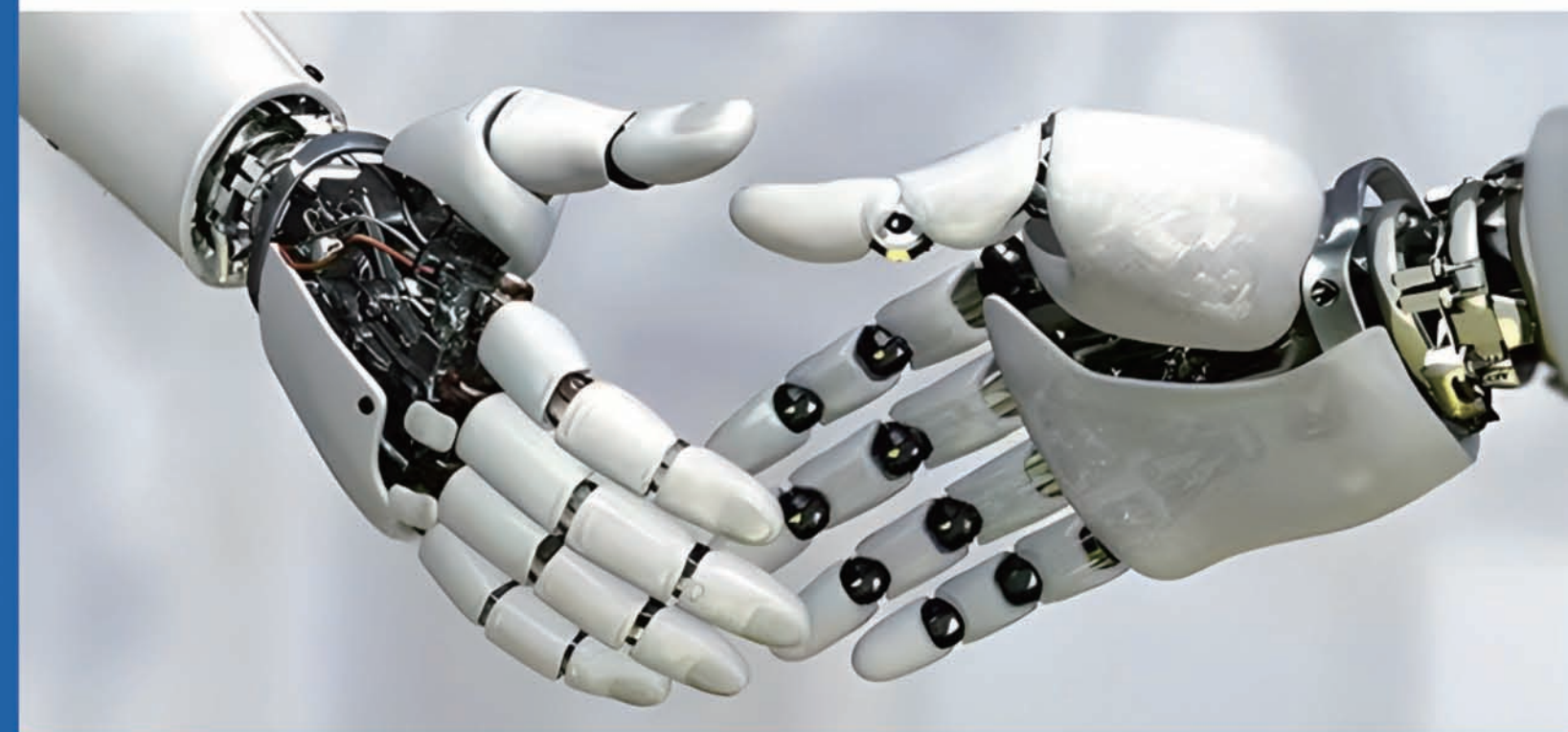




技术 品质 服务
Technical quality service

厦门巨锐自动化设备有限公司
XIAMEN JEARI AUTOMATION OF EQUIPMENT CO.,LTD



厦门巨锐自动化设备有限公司

XIAMEN JEARI AUTOMATION OFEQUIPMENT CO.,LTD

巨锐自控科技（杭州）有限公司

JEARI AUTOMATIC CONTROL TECHNOLOGY (HANGZHOU) CO., LTD

公司地址：厦门市集美区杏林北二路28号3层 杭州市萧山区宁围街道振宁路1号2号楼

联系电话：0086 0592-6214440 0086 0571-82195755

公司网址：www.jeari.com www.hzjrz.com

技术支持：0086 18030016620

电子邮件：xmjeari@126.com

POCT产品

生产设备专业制造商

COMPANY PROFILE

公司简介



- 巨锐自动化设备有限公司是一家集设计 制造 维护为一体的POCT临床诊断产品自动化生产设备制造商和服务商;在厦门集美区和杭州萧山区拥有超过5000平方生产厂房。我们拥有丰富的从业经验,在POCT行业深耕多年。能从产品自身工艺特点出发,使我们制造的自动化设备与产品无缝结合,达到设备的有效性、可靠性、可维护性等特点;
 - 我们的设备广泛应用于体外诊断试剂特别是POCT诊断试剂领域的生产中,成功为国内外多家大型体外诊断试剂厂家提供专业服务;
 - 基于在POCT行业的探索,我们在体外诊断试剂产品上从技术、工艺、到材料都取得了突破,并具有技术支持、原材料供应的全方位技术的先进性,使我们能够提供技术支持及原材料供应,实现设备制造、电化学生物传感器、生物芯片领域,光化学体外诊断产品提供整厂设备,交钥匙工程的整体解决方案;
- 我们的企业宗旨是:竭诚为客户提供优质专业的服务、以专业的团队和优秀的售后配套服务赢得客户的认可。

JEARI Automatic Control Technology (Xiamen) Co., LTD is an equipment manufacturer and service provider that designs, manufactures, and maintains POCT clinical diagnostic products. Our company has more than 5,000 square meters of factory buildings in Jimei District, Xiamen and Xiaoshan District, Hangzhou.

We have been in the POCT industry for many years and have rich experience. Based on the process characteristics of the product itself, we can create automation equipment that can be seamlessly integrated with the product. Our equipment has features such as effectiveness, reliability, and maintainability;

Our machine is widely used in in vitro diagnostic reagents, especially in the field of POCT diagnostic reagents, and has successfully provided professional services to many large in vitro diagnostic reagent manufacturers;

Based on our company's many years of research in the POCT industry, we can provide customers with technical support and raw material supply. From equipment manufacturing, electrochemical biosensors, to biochips, photochemical in vitro diagnostic products, we provide you with complete plant equipment and turnkey project solutions;

Our corporate purpose is: to win the recognition of customers by providing them with high-quality and professional services



厦门巨锐自动化设备有限公司

POCT产品生产设备专业制造商



POCT产品生产设备专业制造商



厦门巨锐自动化设备有限公司

WM-100S 定制型诊断试纸斩切机

WM-100S Customized diagnostic test strip cutting machine

产品介绍 ▶

Product Introduction

- 1、本设备针对各类诊断试纸生产厂商研发而成的高速高精度斩切设备。
- 2、速度最高达450次/分钟，速度快，效率高、质量稳定，是生产企业非常理想的生产辅助设备。针对卷状材料，可定制全自动卷状材料生产。
- 3、对表面印刷了特定标志、色块（如电极或其他线条）的试纸，增加数字光纤扫描精确定位，能完全消除条间的累积误差，保证切出物料条间尺寸公差CV值。
- 4、针对不同需求进行定制可根据切割形状，切割之前贴合保护膜，切割完成收集保护膜，切割完成后产品收集等进行各种扩展功能。



1. This machine is a high-speed and high-precision cutting machine developed for various diagnostic test strip manufacturers
2. The speed can reach up to 450 times/min, with fast speed, high efficiency, and stable quality, it's an ideal production auxiliary equipment. For roll materials, fully automatic roll material production can be customized.
3. Adding digital fiber scanning positioning to test strip with specific markings and color blocks (such as electrodes or other lines) printed on the surface can completely eliminate accumulated errors and ensure the CV value of dimensional tolerances between cut materials strips.
4. Customization can be made for different needs based on the cutting shape. Various extension functions can be applied, such as applying protective film before cutting, collecting protective film after cutting, and collecting products after cutting.

产品参数 ▶

Product parameters

型号	WM-100S
切片速度	260-450rpm(最高)
裁切精度	0.02mm(实际精度以产品材质等影响会产生误差约±0.05MM公差)
最大切片宽度	100mm
适用厚度	0.75mm-2.5mm以内
裁切方式	感应裁切/定长裁切
切片次数	不限(以分切素材排序)
编程操作	触摸屏人机界面输入
机械尺寸	1130MM*550MM*1530根据实际需求定制设备尺寸会有变化
机械重量	约120-180KG
消费电力	0.95-1.6KW
使用电源	AC220V/50.60HZ

Model	WM-100S
Cutting Speed	260-450rpm (maximum)
Cutting Precision	0.02mm (The actual precision may have an error of approximately ±0.05MM due to the influence of product materials and other factors)
Maximum cutting width	100mm
Suitable thickness	Between 0.75mm-2.5mm
Cut Way	Induction cutting/fixed length cutting
Cutting Times	Unlimited (sorted by cutting materials)
Programming	Touch screen interface input
Machine Size	1130MM*550MM*1530 the size will be different according the customized requirement
Machine Weight	About 120-180KG
Electric Power Consume	0.95-1.6KW
Electric Power	AC220V/50.60HZ

WM-100T 功能型诊断试纸斩切机

WM-100T Functional diagnostic test strip cutting machine

产品介绍 ▶

Product Introduction

- 1、本设备针对各类诊断试纸生产厂商需要切割特殊形状和不同需求，研发而成的高速高精度斩切设备
- 2、速度最高达450次/分钟，速度快，效率高、质量稳定，是生产企业非常理想的生产辅助设备。针对卷状材料，可定制全自动卷状材料生产模式。
- 3、对表面印刷了特定标志、色块（如电极或其他线条）的试纸，增加数字光纤扫描精确定位，能完全消除条间的累积误差，保证切出物料条间尺寸公差CV值。
- 4、设备针对不同尺寸，厚度，层数，切割形状，全断和半断等功能进行定制。



1. This machine is developed to meet the needs of diagnostic test strip manufacturers for special shape cutting, and is a high-speed and high-precision cutting machine.
2. The speed can reach up to 450 times/min, with fast speed, high efficiency, and stable quality, it's an ideal production auxiliary equipment. For roll materials, fully automatic roll material production can be customized.
3. Adding digital fiber scanning positioning to test strip with specific markings and color blocks (such as electrodes or other lines) printed on the surface can completely eliminate accumulated errors and ensure the CV value of dimensional tolerances between cut materials strips.
4. The machine is customized for different sizes, thicknesses, layers, cutting shapes, full and half breaks, and other functions.



产品参数 ▶

Product parameters

型号	WM-100T
切片速度	260-450rpm(最高)
裁切精度	0.02mm(实际精度以产品材质等影响会产生误差约±0.05MM公差)
最大切片	100mm-320mm
适用厚度	0.75mm-2.5mm以内
裁切方式	感应裁切/定长裁切
切片次数	不限(以分切素材排序)
编程操作	触摸屏人机界面输入
机械尺寸	630MM*550MM*300根据实际需求定制设备尺寸会有变化
机械重量	约80-160KG
消费电力	0.65-1.6KW
使用电源	AC220V/50.60HZ

Model	WM-100T
Cutting Speed	260-450rpm (maximum)
Cutting Precision	0.02mm (The actual precision may have an error of approximately ±0.05MM due to the influence of product materials and other factors)
Maximum cutting width	100mm-320mm
Suitable thickness	Between 0.75mm-2.5mm以内
Cut Way	Induction cutting/fixed length cutting
Cutting Times	Unlimited (sorted by cutting materials)
Programming	Touch screen interface input
Machine Size	630MM*550MM*300MM (Customizable size according to different requirements)
Machine Weight	About 80-160KG
Electric Power Consume	0.65-1.6KW
Electric Power	AC220V/50.60HZ

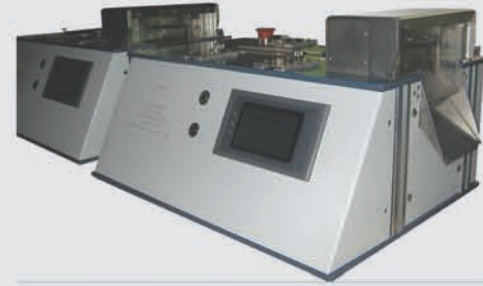
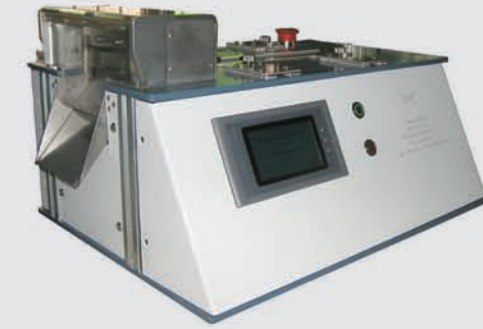
WM-100 诊断试纸斩切机

WM-100 Diagnostic test strip cutting machine

产品介绍 ▶

Product Introduction

- 1、本设备针对各类诊断试纸生产厂商研发而成的高速高精度斩切设备
- 2、速度最高达450次/分钟，速度快，效率高、质量稳定，是生产企业非常理想的生产辅助设备。
- 3、对表面印刷了特定标志、色块（如电极或其他线条）的试纸、增加数字光纤扫描精确定位，能完全消除条间的累积误差，保证切出物料条间尺寸公差CV值。



1. This machine is a high-speed and high-precision cutting machine developed for various diagnostic test strip manufacturers.
2. The speed can reach up to 450 times/min, with fast speed, high efficiency, and stable quality, it's an ideal production auxiliary equipment.
3. Adding digital fiber scanning positioning to test strip with specific markings and color blocks (such as electrodes or other lines) printed on the surface can completely eliminate accumulated errors and ensure the CV value of dimensional tolerances between cut materials strips.

产品参数 ▶

Product parameters

型号	WM-100
切片速度	450rpm(最高)
裁切精度	0.02mm (实际精度以产品材质等影响会产生误差约±0.05MM公差)
最大切片宽度	100mm
适用厚度	1.5mm以内
裁切方式	感应裁切/定长裁切
切片次数	不限 (以分切素材排序)
编程操作	机械式文本/触摸屏人机界面输入
机械尺寸	530MM*450MM*300
机械重量	约60KG
消费电力	0.65KW
使用电源	AC220V/50、60HZ

Model	WM-100
Cutting Speed	450rpm (Maximum)
Cutting Precision	0.02mm (The actual precision may have an error of approximately ±0.05MM due to the influence of product materials and other factors)
Maximum cutting width	100mm
Suitable Thickness	Within 1.5mm
Cutting Way	Induction cutting/fixed length cutting
Cutting Times	Unlimited (sorted by cutting materials)
Programming	Mechanical Text/Touch screen interface input
Machine Size	530MM*450MM*300MM
Machine Weight	About 60KG
Electric Power Consume	0.65KW
Electric Power	AC220V/50,60HZ

WM-201-ZM 诊断试纸基材打孔机

WM-201-ZM Diagnostic test strip punching machine

产品介绍 ▶

Product Introduction

- 1、本设备针对非标准片状材料研发而成的小试生产冲孔设备。
- 2、设备可选配自动感应特定标识，自动校正，速度快，效率高、质量稳定，是生产企业非常理想的生产辅助设备。
- 3、对不同形状以及孔尺寸，可选择定制，快速更换模具。
- 4、模具采用日本进口SKD-61合金材料配合真空热处理具有很好的耐磨性，可定制表面度钛处理。



1. This machine is a small-scale production punching machine developed for non-standard sheet materials.
2. The machine can be matched with automatic sensing of specific identification functions, automatic calibration, fast speed, high efficiency, and stable quality, making it an ideal production auxiliary machine for manufacturers.
3. Provide customized services for different shapes and hole sizes, allowing for quick mold replacement.
4. The mold used SKD-61 alloy material from Japan cooperate with vacuum heat treatment, which has good wear resistance and can be customized with titanium surface treatment.

产品参数 ▶

Product parameters

型号	WM-201-ZM
工作台面行程	100mm-260mm 按照产品大小来确定工作台面
裁切精度	裁切尺寸±0.05mm以内
适用厚度	0.35mm以内
冲切方式	模切定型式可更换模具。
最小冲切孔径	0.6MM
最大冲压力	500公斤
机械尺寸	660MM*500MM*500MM (按照产品定制外形会有变化)
气源	0.6-0.8Mpa (干净气源)
机械重量	约90KG-160KG
消费电力	约0.6KW
使用电源	AC220V/50、60HZ

Model	WM-201-ZM
Work table route	100mm-260mm According the sheet's real size to confirm
Cutting Precision	within ±0.15mm
Suitable Thickness	Within 0.35MM
Cutting way	Die cutting and shaping, mold can be replaced
Minimum punching hole diameter	0.6MM
Maximum punching pressure	500KGS
Machine Size	660MM*500MM*500MM (the size will be different according the customized requirement)
Gas Source	0.6-0.8Mpa (Clean gas source)
Machine Weight	About 90KG-160KG
Electric Power Consume	About 0.6KW
Electric Power	AC220V/50,60HZ

WM-201-ZS诊断试纸基材成型机

WM-201-ZS Diagnostic test strip substrate forming machine

产品介绍 ▶

Product Introduction

- 1、本设备针对需要标准外形和定位孔功能试纸基材厂商研发而成的一次成型模切设备。
- 2、设备可选配带自动感应特定标识，自动校正，速度快，效率高、质量稳定，是生产企业非常理想的生产辅助设备。
- 3、可根据不同需求制作模具，可一次成型基材定位孔和外形。
- 4、模具采用日本进口SKD-61合金材料配合真空热处理具有很好的耐磨性，可定制表面度钛处理。

1. This machine is a one-stage processing forming machine developed for test strip substrate manufacturers who require standard shape and positioning hole functions.
2. The machine can be matched with automatic sensing of specific identification functions, automatic calibration, fast speed, high efficiency, and stable quality, making it an ideal production auxiliary machine for manufacturers.
3. Molds can be made according to different needs, and substrate positioning holes and shapes can be formed in one go.
4. The mold used SKD-61 alloy material from Japan cooperate with vacuum heat treatment, which has good wear resistance and can be customized with titanium surface treatment.



产品参数 ▶

Product parameters

型号	WM-201-ZS
工作台面行程	100mm-650mm 按照产品大小定制工作台面
裁切精度	裁切尺寸±0.03mm以内
适用厚度	1mm以内
裁切方式	模切定型式
最大修边外形	100MM*450MM
最大冲压力	气液增压方式 3T-10T可选配
机械尺寸	760MM*600MM*1500MM (按照产品定制外形会有变化)
气源	0.6-0.8Mpa(干净气源)
机械重量	约90KG-760KG
消费电力	约1.3KW
使用电源	AC220V/50.60HZ

Model	WM-201-ZS
Work table route	100mm-650mm According the sheet's real size to confirm
Cutting Precision	Within ± 0.03mm
Suitable Thickness	Within 1mm
Cutting Way	Die cutting and shaping
Maximum Size	100MM*450MM
Maximum punching pressure	Gas liquid supercharging ways 3T-10T(Configuration can be selected)
Machine Size	760MM*600MM*1500MM (the size and shape will be different according customized requirement)
Gas Source	0.6-0.8Mpa (Clean gas source)
Machine Weight	About 90KG-760KG
Electric Power Consume	About 1.3KW
Electric Power	AC220V/50,60HZ

WM-201-ZS诊断试纸卷状覆胶冲孔机

WM-201-ZS Diagnostic test strip roll shaped adhesive

产品介绍 ▶

Product Introduction

- 1、本设备针对各类试纸基材覆胶和冲孔成型工艺研发而成的大规模化生产设备
- 2、设备自动收放料，自动贴胶，离型纸自动收卷，自动滚压，自动冲孔等工艺，速度快，效率高、质量稳定，是生产企业非常理想的生产辅助设备。
- 3、设备自动定位覆胶，一次性可成型240个孔，针对需求可定制CCD检测，进行贴胶和冲孔尺寸测量，毛刺，缺陷等检测。

- 1.This machine is a production machine developed for various types of test strip substrates, including adhesive coating and punching forming processes.
- 2.The machine can automatically retract and release materials, automatically skim-coating, paper automatically roll up, automatically rolling, automatically punch and other processes, with fast speed, high efficiency, and stable quality, it's an ideal manufacturing support equipment.
- 3.The equipment automatically positions and covers adhesive, which can form 240 holes at once. CCD detection can be customized according to needs, can skim-coating and measure dimension of punching holes, detecting burrs, defects, and so on.



产品参数 ▶

Product parameters

型号	WM-201-ZS
工作台面行程	100mm以内宽度
冲切精度	裁切尺寸±0.02mm以内
适用厚度	1mm以内
裁切方式	模切定型式
覆胶通道	5通道以内(通道最小间隙0.2毫米)
最大冲压力	气液增压方式 3T-5T可选配
机械尺寸	3760MM*800MM*1950MM (按照产品定制外形会有变化)
气源	0.6-0.8Mpa(干净气源)
机械重量	约1060KG
消费电力	约1.5KW
使用电源	AC220V/50.60HZ

Model	WM-201-ZS
Work table route	Within 100mm width
Punching Precision	Within ± 0.02mm
Suitable Thickness	Within 1mm
Cutting Way	Die-cutting and shaping type
Adhesive covered channel	Within 5 channels, (The min clearance between channels is 0.2mm)
Maximum punching pressure	Gas liquid supercharging ways 3T-5T(Configuration can be selected)
Machine Size	3760MM*800MM*1950MM (the size and shape will be different according customized requirement)
Gas Source	0.6-0.8Mpa (clean gas source)
Machine Weight	About 1060KG
Electronic Power Consume	About 1.5KW
Electric Power	AC220V/50,60HZ

WM-202血糖试纸异型模切成型机

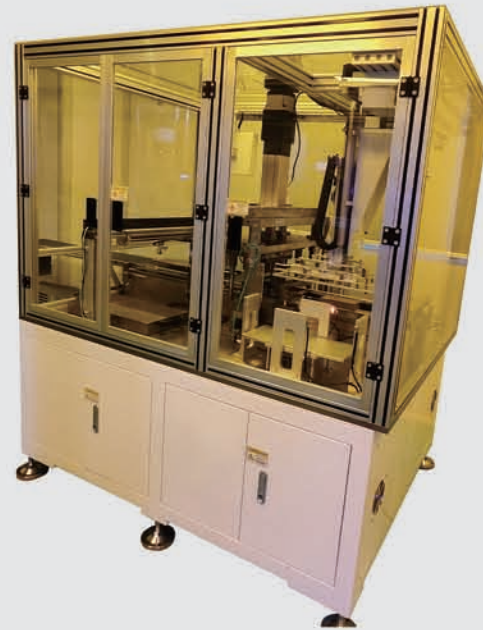
WM-202 Blood glucose test strip special-shaped die-cutting machine

产品介绍 ▶

Product Introduction

- 1、本设备针对血糖试纸异型外形产品厂商，研发而成的高精度模切式设备。
- 2、设备采用孔定位，是生产企业非常理想的生产辅助设备。
- 3、可根据不同形状制作模具，可一次成型25片-50片。
- 4、模具采用日本进口SKD-61合金材料配合真空热处理具有很好的耐磨性，可定制表面度钛处理。
- 5、设备采用自动化上下料，模切完成后尾料自动收集。
- 6、设备可选择增加CCD检测功能自动剔除不良品和自动计算入瓶等功能。

1. High precision die-cutting equipment developed for manufacturers of irregular blood glucose test strips.
2. The machine adopts hole positioning, which is an ideal manufacturers support equipment.
3. Molds can be made according to different shapes, forming 25-50 pieces at once.
4. The mold used SKD-61 alloy material from Japan cooperate with vacuum heat treatment, which has good wear resistance and can be customized with titanium surface treatment.
5. The machine can automatically retract and release materials, and the tail material is automatically collected after the diecutting is completed.
6. CCD detection function, automatic rejection of defective products, and automatic calculation of bottle feeding can be added.



产品参数 ▶

Product parameters

型号	WM-202
工作台面行程	100mm-650mm 按照产品大小定制工作台面
裁切精度	裁切尺寸±0.03mm以内
适用厚度	1mm以内
裁切方式	模切定型式
裁切速度	单次(最高速度每分钟40次)
单片试条最大外形	10MM
单片试条形状	根据需求定制(圆形,角度,弧度等)
料仓容量	200张大卡
换模具时间	小于20分钟
最大冲压力	气液增压方式 7T-10T可选配
噪音	小于70分贝
扩展功能	可连接全自动收集入瓶功能
机械尺寸	2260MM*1600MM*1950MM (按照产品定制外形会有变化)
气源	0.6-0.8Mpa(干净气源)
机械重量	约700KG-2660KG
消费电力	约5.5KW
使用电源	AC220V/50.60HZ

Model	WM-202
Work table route	100mm-650mm can be customized according to product size.
Cutting Precision	Within ±0.02mm
Suitable Thickness	Within 1mm
Cutting Way	Die cutting and shaping
Cutting Speed	(Maximum 40 times/min) Each time
Maximum size of Single strip	10MM
Shape of single strip	Customized according to needs (Round, angles, radians, etc)
Silo Capacity	200 sheets
Mold replacement time	Less than 20 minutes
Maximum Punching pressure	Gas liquid supercharging ways 7T-10T(Configuration can be selected)
Noise	Less than 70 decibel
Extended function	Can be connected to the fully automatic bottle collection function
Machine Size	2260MM*1600MM*1950MM (the size and shape will be different according customized requirement)
Gas Source	0.6-0.8Mpa (clean gas source)
Machine Weight	About 700KG-2660KG
Electric Power Consume	About 5.5KW
Electric Power	AC220V/50,60HZ

WM-202-XB血糖试纸PET底卡半自动冲孔成型机

WM-202-XB Blood glucose test strip PET sheet semi-automatic punching and forming machine

产品介绍 ▶

Product Introduction

- 1、本设备针对血糖试纸印刷后，长距离吸血槽增加冲孔功能，研发而成的高精度设备
- 2、设备采用孔定位，人工放料，设备自动冲孔，自动收集废料，成品自动收集。是生产企业非常理想的生产辅助设备。
- 3、可根据不同要求制作模具，最小孔径0.8毫米，可一次成型50片。设备可选择增加CCD检测功能自动识别冲孔位置，冲孔尺寸测量。
- 4、模具采用日本进口SKD-61合金材料配合真空热处理具有很好的耐磨性，可定制表面度钛处理。

1. This machine has added a punching function to the printed blood glucose test strip with high-precision machine.
2. The equipment adopts hole positioning technology, manual feeding, automatic punching, automatic collection of waste materials, and automatic collection of finished products. It is an ideal auxiliary equipment for manufacturers.
3. This device can make molds according to different requirements, with a minimum aperture of 0.8mm, and can form 50 pieces at once. The device can add CCD detection function, which can automatically recognize the punching position and perform size measurement.
4. The mold is made of SKD-61 alloy material from Japan, match with vacuum heat treatment technology, which has good wear resistance and can be customized with surface titanium treatment.



产品参数 ▶

Product parameters

型号	WM-202-XB
工作台面行程	100mm-650mm按照产品大小定制工作台面
冲孔精度	裁切尺寸±0.02mm 以内
定位精度	±0.1mm
适用厚度	0.35mm 以内
冲切速度	单次(最高速度每分钟20次)
定位	设备自动定位
换模具时间	小于 20分钟
最大冲压力	7T-10T 可选配
噪音	小于70分贝
机械尺寸	2060MM*1200MM*1950MM(按照产品定制外形会有变化)
气源	0.6-0.8Mpa(干净气源)
机械重量	约 900KG-1660KG
消费电力	约 5.5KW
使用电源	AC220V/50、60HZ

Model	WM-202-XB
Work Table Route	100mm-650mm Can be customized according to size of product
Punching Precision	Cutting size within ±0.02mm
Positioning Precision	±0.1mm
Suitable Thickness	Within 0.35mm
Cutting Speed	(Top speed 20 times/min) each time
Positioning	Automatic positioning
Mold replacement time	Less than 20 minute
Maximum punching pressure	7T-10T can be chosen
Noise	Less than 70 decibels
Machine Size	2060MM*1200MM*1950MM (the size and shape will be different according customized requirement)
Gas Source	0.6-0.8Mpa (clean gas source)
Machine Weight	About 900KG-1660KG
Electric Power Consume	About 5.5KW
Electric Power	AC220V/50,60HZ

WM-202-XZ血糖试纸PET底卡全自动冲孔成型机

WM-202-XZ Blood glucose test strip PET sheet automatic punching and forming machine

产品介绍 ▶

Product Introduction

- 1、本设备针对血糖试纸印刷后，长距离吸血槽增加冲孔功能，研发而成的高精度设备
- 2、设备采用孔定位，自动上料，设备自动定位冲孔，自动收集废料，成品自动收集。是生产企业非常理想的生产辅助设备。
- 3、可根据不同要求制作模具，最小孔径0.8毫米，可一次成型50片。设备可选择增加CCD检测功能自动识别冲孔位置，冲孔尺寸测量。
- 4、模具采用日本进口SKD-61合金材料配合真空热处理具有很好的耐磨性，可定制表面度钛处理。



1. This machine has added a punching function to the printed blood glucose test strip with high-precision machine.
2. The equipment adopts hole positioning technology, manual feeding, automatic punching, automatic collection of waste materials, and automatic collection of finished products. It is an ideal auxiliary equipment for manufacturers.
3. This device can make molds according to different requirements, with a minimum aperture of 0.8mm, and can form 50 pieces at once. The device can add CCD detection function, which can automatically recognize the punching position and perform size measurement.
4. The mold is made of SKD-61 alloy material from Japan, match with vacuum heat treatment technology, which has good wear resistance and can be customized with surface titanium treatment.

产品参数 ▶

Product parameters

型号	WM-202-XZ	Model	WM-202-XZ
工作台面行程	100mm-650mm按照产品大小定制工作台面	Work Table Routee	100mm-650mm Can be customized according to size of product
冲孔精度	裁切尺寸±0.02mm 以内	Punching Precisione	Cutting size within ±0.02mm
定位精度	±0.1mm	Positioning Precisione	±0.1mm
适用厚度	0.35mm 以内	Suitable Thicknesse	Within 0.35mm
料仓容量	300张大卡	Silo Capacity	300 sheet
冲切速度	单次(最高速度每分钟20次)	Cutting Speed	(Top speed 20 times/min) each time
定位	设备自动定位	Positioning	Automatic positioning
换模具时间	小于20分钟	Mold replacement timee	Less than 20 minute
最大冲压力	7T-10T可选配	Maximum punching pressure	7T-10T can be chosen
噪音	小于70分贝	Noise	Less than 70 decibels
机械尺寸	2760MM*1200MM*1950MM(按照产品定制外形会有变化)	Machine Sizee	2060MM*1200MM*1950MM (the size and shape will be different according customized requirement)
气源	0.6-0.8Mpa(干净气源)	Gas Sourcee	0.6-0.8Mpa (clean gas source)
机械重量	约900KG-1660KG	Machine Weighte	About 900KG-1660KG
消费电力	约5.5KW	Electric Power Consumee	About 5.5KW
使用电源	AC220V/50、60HZ	Electric Powere	AC220V/50,60HZ

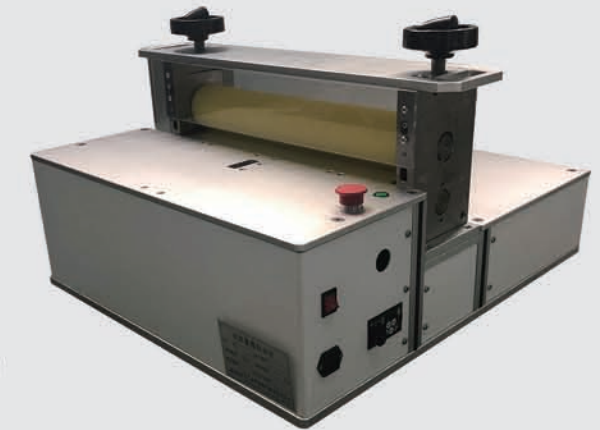
WM-203诊断试纸覆膜压合机

WM-203 Diagnostic test strip laminating machine

产品介绍 ▶

Product Introduction

- 1、本设备针对电化学试纸多层贴合完成后，压合工艺研发而成设备
- 2、设备带自动感应功能，当试纸进入设备工作区域，设备自动启动，速度快，效率高、质量稳定，是生产企业非常理想的生产辅助设备。
- 3、针对不同厚度和层数的产品，设备可以调整不同的下压力。
- 4、针对特殊客户定制可增加链接模块，可增加多棍轴功能或者用于全自动贴合机上的单个工作工位。



1. Developing for the lamination process of electrochemical test strip after multi-layer bonding is completed
2. The machine is equipped with automatic sensing function. When the test strip enters the working area, the machine will automatically start, with fast speed, high efficiency, and stable quality, making it an ideal production auxiliary equipment.
3. Equipment can adjust different downforce for products with different thicknesses and layers.
4. Link modules can be added according to the special needs of customers, with the option of adding multiple shaft functions or being used for a single work unit on a fully automatic laminating machine.

产品参数 ▶

Product parameters

型号	WM-203包含单机或作为连接生产线的压合工位	Model	WM-203 Compression machine that as a single machine or serves as a connection to a production line
工作台面行程	100mm-480mm 按照产品大小来确定工作台面	Work table route	100mm-480mm can be customized according to product size.
适用厚度	0.1-2.5mm以内	Suitable Thickness	Within 0.1-2.5mm
速度	最高每秒400MM, 速度可调整	Speed	Can be adjusted, Maximum 400mm/s
压力	5-80KG可调整	Pressure	5-80KG(can be adjusted)
机械尺寸	860MM*650MM*600MM (按照产品定制外形会有变化)	Machine Size	860MM*650MM*600MM (the size and shape will be different according customized requirement)
机械重量	约135KG	Machine Weight	About 135KG
消费电力	约0.4KW	Electric Power Consume	About 0.4KW
使用电源	AC220V/50、60HZ	Electric Power	AC220V/50,60HZ

WM-205-ZD 血糖试纸全自动贴合生产线

WM-205-ZD Blood glucose test strip fully automatic lamination production line

产品介绍 ▶

Product Introduction

- 1、本设备针对血糖试纸等贴合的生产工艺研发而成，设备能够实现自动化生产，无需人工操作。
- 2、设备针对血糖试纸从取料，对位，贴合压合，检测等工艺，设备能够自动完成，自动识别特定标识、自动校正能够准确的贴合到电极基板上，速度快，效率高、质量稳定，是生产企业非常理想的生产设备。
- 3、设备能够连接隧道炉，实现自动取料，可增加多个贴合工位，贴合完成后可自动检测贴合效果，不良品设备自动剔除。
- 4、设备采用总线通信控制方式。针对客户定制可增加远程通信，以方便未来设备维护以及软件升级。

- 1.This machine is developed for the lamination process of blood glucose test strips, and can achieve automated production without the need for manual operation.
- 2.The machine can complete the process of blood glucose test strips from material collection, alignment, fitting and pressing, detection, etc. It can automatically identify specific labels, automatically correct, and accurately adhere to the electrode substrate. It is a very ideal production equipment with fast speed, high efficiency, and stable quality.
- 3.The machine can be connected to the tunnel furnace to achieve automatic material retrieval, and multiple bonding stations can be added.After bonding is completed, the bonding effect can be automatically detected, and defective products can be automatically removed by the machine.
- 4.The machine adopts bus communication control mode. Remote communication can be increased according to customer requirements for future equipment maintenance and software upgrades.



产品参数 ▶

Product parameters

项目	参数
贴合次数	可根据客户的需求定制
生产效率	依照产品的工艺以及贴合要求，效率会有变化
工作台版面	(基板)500mmX500mm以内
原材料进料方式	卷状原材料 血糖试纸类最高4道，
隧道炉等待料仓	可停留30片
不干胶隔离纸	自动回收
贴合误差	+0.1mm
CCD检测	检测：来料酶点，基板定位，贴合膜定位校正，贴合效果。
编程方式	触摸屏人机界面输入
气源	0.6Mpa (干净气源并且需配合不少于1立方米的储气罐)
设备尺寸	长3800MM宽1200MM高1950MM
消费电力	4.2KW
重量	约1800公斤

Item	Parameter
Laminating machine	Customized according to customer needs
Efficiency of production	Efficiency may vary depending on the production process and fit requirements of the product
Work Table Size	(Base plate) Within 500mmX500mm
Raw material feeding way	Roll shaped raw materials,Maximum 4 for blood glucose test strips
Tunnel furnace waiting for material silo	Can stay for 30 pieces
Adhesive isolation paper	Automatic recycling
Adhesive error	±0.1mm
CCD detection	Detection: Material enzyme point, substrate positioning, adhesive film positioning correction, adhesive effect.
Programming	Touch screen interface input
Gas Source	0.6Mpa (Clean gas source and requires a storage tank of no less than 1cbm)
Machine Size	3800MM*1200MM*1950MM
Electric Power Consume	4.2KW
Machine Weight	About 1800 KG

WM-205血糖试纸半自动贴合机

WM-205 Blood glucose test strip semi-automatic laminating machine

产品介绍 ▶

Product Introduction

- 1、本设备针对血糖等电化学试纸产品，需要贴合的生产工艺研发而成。
- 2、设备针对血糖试纸虹吸槽亲水膜等部分、由设备定位槽或者定位孔进行定位、设备能够准确的贴合到电极基板上，速度快，效率高、质量稳定，是生产企业非常理想的生产设备。
- 3、针对需要加热压合工艺，可匹配增加加热压工艺设备，使制造过程更加流畅。

1. This machine is developed for electrochemical test strip products such as blood sugar, and requires a production process that is suitable for lamination.
2. The machine is mainly designed for the hydrophilic film part of the blood glucose test paper siphon tank. It is positioned by positioning slots or holes, and can accurately adhere to the electrode substrate. It has fast speed, high efficiency, and stable quality, it's an ideal production equipment for manufactures.
3. For processes that require heating and pressing, additional hot pressing equipment can be added to make the manufacturing process smoother.



产品参数 ▶

Product parameters

项目	参数
贴合通道	可根据客户的需求定制(最高12道)
生产效率	依照产品的工艺以及贴合要求，效率会有变化
工作台版面	(基板)500mmX500mm以内
原材料方式	片状材料
定位方式	定位槽定位或者定位孔定位
贴合误差	+0.1mm
吸附方式	真空吸附
气源	0.6Mpa (干净气源并且需配合不少于1立方米的储气罐)
设备尺寸	长1250MM宽900MM高1600MM
消费电力	0.5KW
重量	约190公斤

Item	Parameter
Adhesive channel	Can be customized according customer's requirement. (Maximum 12 channel)
Production Efficiency	Efficiency will vary depending on the product's process and fit requirements
Work Table Size	(Base plate) Within 500mmX500mm
Raw Material Shape	sheet
Positioning methods	Positioning slot or hole
Adhesive error	±0.1mm
Adsorption Way	Vacuum
Gas Source	0.6Mpa (Clean gas source and requires a storage tank of no less than 1cbm)
Machine Size	1250MM*900MM*1600MM
Electric Power Consume	0.5KW
Machine Weight	About 190KG

WM-210-ZM 诊断试纸异型滚切机

WM-210-ZM Diagnostic test strip irregular rolling cutting machine

产品介绍 ▶

Product Introduction

- 1、本设备针对试纸需要特殊形状切割研发而成的高精度高效率滚切设备
- 2、设备分为：1.人工中线对位、或者边线定位，2.定位孔定位。2种类型定位的方式。速度快，效率高、质量稳定，是生产企业非常理想的生产设备。
- 3、针对人工中线对位，定位孔定位。类型的设备无需编辑程序。操作简单快捷
- 4、针对不同形状外形更换不同刀具，并且可滚切半断或者全断产品。

1. This machine is a high-precision and high-efficiency rolling cutting equipment developed for the cutting needs of special shaped test strips
2. The equipment is divided into manual centerline alignment, or edge positioning and hole positioning. Fast speed, high efficiency, and stable quality make it an ideal production equipment for manufacturers.
3. For machine with manual alignment and positioning holes, there is no need to edit the program, and the operation is simple and fast.
4. The cutting tool can be replaced according to different shapes and can be used to roll cut semi or fully broken products.



产品参数 ▶

Product parameters

型号	WM-210-ZM
工作台面行程	200mmX150mm-260mmX200mm 按照产品大小来确定工作台面
裁切精度	人工对位：根据人工对位的现象一般在±0.1以内（正确对位后的直线偏移）滚切精度：±0.05MM
最大切割宽度	15-40MM/根据需要宽度定制
滚切通道(条数)	2-4道(按照客户需要定制)
适用厚度	1.2mm以内(PET材料)
滚切速度	最高220转/分钟，速度可调整
编程操作	触摸屏人机界面输入 (人工对位和定位孔定位无需编程)
机械尺寸	560MM*450MM*370MM (根据版面不同设备尺寸会有变化)
气源	0.6Mpa(干净气源)
机械重量	约65-90KG(根据设备大小重量会有变化)
消费电力	0.5KW
使用电源	AC220V/50、60HZ

Model	WM-210-ZM
Work table route	200mmX150mm-260mmX200mm can be customized according to product size.
Cutting Precision	Manual alignment: Generally within ±0.1 (Shifting after correct alignment) Roll cutting precision: ±0.05MM
Maximum Cutting Width	15-40MM/Can be customized according to needs
Qty of Roll channel	2-4 channels (Customized according to needs)
Suitable Thickness	Within 1.2mm (PET)
Cutting Speed	Up to 220 rpm/min, (can be adjusted)
Programming	Touch screen interface input (Manual alignment and hole positioning do not require programming)
Machine Size	560MM*450MM*370MM (The size may vary depending on the layout)
Gas Source	0.6Mpa (Clean gas source)
Machine Weight	About 65-90KG (based on the size of machine)
Electric Power Consume	0.5KW
Electric Power	AC220V/50,60HZ

WM-210 血糖试纸半自动条形滚切机

WM-210 Blood glucose test strip semi-automatic strip rolling cutting machine

产品介绍 ▶

Product Introduction

- 1、本设备针对血糖试纸大卡长条切割生产研发而成的高精度高效率滚切设备
- 2、设备分为：1.带自动感应特定标识、自动校正，2.人工中线对位、或者边线定位，3.定位孔定位。3种类型定位的方式。速度快，效率高、质量稳定，是生产企业非常理想的生产设备。
- 3、针对人工中线对位，定位孔定位。类型的设备无需编辑程序。操作简单快捷
- 4、采用美国进口D2合金刀片/或日本F2A高速合金钢刀片，具有很好的耐磨性，且经久耐用。可估计客户需要度钛处理，一般可使用2到3年无需要修磨。

1. The machine is a automatic strip rolling cutting machine developed for cutting blood glucose test strips sheet
2. The machine is divided into three positioning way: 1. With automatic sensing of specific identification and automatic correction, 2. Manual centerline alignment or edge positioning 3. Hole positioning. Fast speed, high efficiency, and stable quality make it an ideal large-scale production equipment for manufacturers.
3. For machine with manual alignment and positioning holes, there is no need to edit the program, and the operation is simple and fast.
4. Using D2 alloy blades from the United States or F2A high-speed alloy steel blades from Japan, it has good wear resistance and durability. It can be estimated titanium treatment according to needs, which can generally be used for 2 to 3 years without wear and tear.



产品参数 ▶

Product parameters

型号	WM-210
工作台面行程	200mmX150mm-660mmX520mm 按照产品大小来确定工作台面
裁切精度	感应式：300mm以内误差±0.1mm（正确对位后的直线偏移）人工对位：根据人工对位的现象一般在±0.1以内（正确对位后的直线偏移）
最大切割宽度	25-40MM/根据需要宽度定制
滚切通道(条数)	4-12道(按照客户需要定制)
适用厚度	1.2mm以内(PET材料)
滚切速度	最高220转/分钟，速度可调整
编程操作	触摸屏人机界面输入 (人工对位和定位孔定位无需编程)
机械尺寸	660MM*650MM*370MM (根据版面不同设备尺寸会有变化)
气源	0.6Mpa(干净气源)
机械重量	约65-160KG(根据设备大小重量会有变化)
消费电力	0.7KW
使用电源	AC220V/50、60HZ

Model	WM-210
Work Table Route	200mmX150mm-660mmX520mm can be customized according to product size.
Cutting Precision	Induction Type: ±0.1mm (Within 300mm, Shifting after correct alignment) Manual alignment: Generally within ±0.1 (Shifting after correct alignment)
Maximum Cutting Width	25-40MM/Can be customized according to needs
Qty of Roll channel	4-12 channels (Customized according to needs)
Suitable Thickness	Within 1.2mm (PET)
Roll Cutting Speed	Up to 220 rpm/min, (can be adjusted)
Programming	Touch screen interface input (Manual alignment and hole positioning do not require programming)
Machine Size	660MM*650MM*370MM (The size may vary depending on the layout)
Gas Source	0.6Mpa (clean gas source)
Machine weight	About 65-160KG (based on the size of machine)
Electric Power Consume	0.7KW
Electric Power	AC220V/50,60HZ

WM-211-CA 血糖试纸全自动条形滚切机

WM-211-CA Blood glucose test strip fully automatic strip rolling cutting machine

产品介绍 ▶

Product Introduction

- 1、本设备针对血糖试纸大卡长条切割生产，研发而成的全自动条形滚切设备
- 2、设备分为：1.带自动感应特定标识、自动校正，2.定位孔定位。3.边线定位。3种类型定位的方式。速度快，效率高、质量稳定，是生产企业非常理想的大规模化生产设备。
- 3、对表面印刷了特定标志、色块（如电极或其他线条）的版面、CCD视觉扫描精确定位。
- 4、采用美国进口D2合金刀片/或日本F2A高速合金钢刀片，具有很好的耐磨性，且经久耐用。可估计客户需要度钛处理，一般可使用2到3年无需要修磨。



1. The machine is a automatic strip rolling cutting machine developed for cutting blood glucose test strips sheet
2. The machine is divided into: 1. It has automatic sensing identification that can be automatically calibrated, 2.Hole positioning. 3. Edge positioning.Fast speed, high efficiency, and stable quality make it an ideal large-scale production equipment for manufacturers.
3. The sheet with specific markings and color blocks (such as electrodes or other lines) printed on the surface can be accurately positioned through CCD detection.
4. Using D2 alloy blades from the United States or F2A highspeed alloy steel blades from Japan, it has good wear resistance and durability. It can be estimated titanium treatment according to needs , which can generally be used for 2 to 3 years without wear and tear.

产品参数 ▶

Prodt parameters

型号	WM-212-CA
工作台面行程	200mmX150mm-660mmX520mm 按照产品大小来确定工作台面
裁切精度	300mm以内误差+0.1mm (正确对位后的直线偏移) 滚切精度:±0.05MM
最大切割宽度	25-40MM/根据需要宽度定制
滚切通道(条数)	4-12道(按照客户需要定制)
适用厚度	1.2mm以内(PET材料)
存储料仓	约300片大版
切割速度	约10秒(大卡)
收料方式	可连接生产线输送或料仓收集
滚切速度	最高220转/分钟,速度可调整
编程操作	触摸屏人机界面输入 (人工对位和定位孔定位无需编程)
机械尺寸	1960MM*1050MM*1950MM (根据版面不同设备尺寸会有变化)
气源	0.6Mpa(干净气源)
机械重量	约620KG(根据设备大小重量会有变化)
消费电力	2.7KW
使用电源	AC220V/50、60HZ

Model	WM-212-CA
Work Table Route	200mmX150mm-660mmX520mm Can be customized according to size of product
Cutting Precision	±0.1mm (Within 300mm, Shifting after correct alignment) Roll cutting precision: ±0.05mm
Maximum Cutting Width	25-40mm/Can be customized according to needs
Qty of Roll channel	4-12 channels (Customized according to needs)
Suitable Thickness	Within 1.2mm (PET)
Silo Capacity	About 300 sheet
Cutting Speed	About 10 seconds (sheet)
Receiving materials way	Can be connected to the production line forConveying or silo collection
Roll Cutting Speed	Up to 220 rpm/min,(can be adjusted)
Programming	Touch screen interface input (Manual alignment and hole positioning do not require programming)
Machine Size	1960MM*1050MM*1950MM (The size may vary depending on the layout)
Gas Source	0.6Mpa (clean gas source)
Machine Weight	About 620KG(based on the size of machine)
Electric Power Consume	2.7KW
Electric Power	AC220V/50,60HZ

WM-212-CB 血糖试纸全自动条形滚切检测生产线

WM-212-CB Automatic strip rolling detection production line for blood glucose test strips

产品介绍 ▶

Product Introduction

- 1、本设备针对血糖试纸大卡长条切割生产，研发而成的全自动条形滚切工艺生产线
- 2、设备由机械手自动上料，自动对位，自动定位后由CCD视觉2次确认位置，切割完成后对切割成品进行测量，检测标记点，进行标记品收集，不良品收集，成品收集。
- 3、设备可选配检测机构，对切割尺寸进行测量，虹吸口部分尺寸测量以及堵胶进行判断。可增加对产品进行电极阻抗全检，剔除不良品。
- 4、采用美国进口D2合金刀片/或日本F2A高速合金钢刀片，具有很好的耐磨性，且经久耐用。可估计客户需要度钛处理，一般可使用2到3年无需要修磨。



1. The machine is a automatic strip rolling cutting machine developed for cutting blood glucose test strips sheet
2. The machine is divided into three positioning way: 1. With automatic sensing of specific identification and automatic correction, 2. Manual centerline alignment or edge positioning 3. Hole positioning. Fast speed, high efficiency,and stable quality make it an ideal large-scale production equipment for manufacturers.
3. For machine with manual alignment and positioning holes, there is no need to edit the program, and the operation is simple and fast.
4. Using D2 alloy blades from the United States or F2A high-speed alloy steel blades from Japan, it has good wear resistance and durability. It can be estimated titanium treatment according to needs , which can generally be used for 2 to 3 years without wear and tear.

产品参数 ▶

Prodt parameters

型号	WM-212-CB
工作台面行程	200mmX150mm-660mmX520mm 按照产品大小来确定工作台面
裁切精度	机械手配合视觉:300mm以内误差+0.1mm
最大切割宽度	25-40MM/根据需要宽度定制
滚切通道(条数)	4-12道(按照客户需要定制)
适用厚度	1.2mm以内(PET材料)
存储料仓	约300片大版
切割速度	约10秒(大卡)
CCD检测	7组视觉检测覆盖全流程生产状况 可存储每一次生产过程中照片
阻抗检测	按产品需要定制
收料方式	全自动收集,(分标记料仓,不良品料仓,成品料仓)
编程操作	触摸屏人机界面输入(以及远程协助)
机械尺寸	2660MM*2450MM*1950MM (根据版面不同设备尺寸会有变化)
气源	0.6Mpa(干净气源)
机械重量	约1220KG(根据设备大小重量会有变化)
消费电力	3.2KVA
使用电源	AC220V/50、60HZ

Model	WM-212-CB
Work table Route	200mmX150mm-660mmX520mm Can be customized according to size of product
Cutting Precision	Robot arm with visual coordination; error ±0.1mm within 300mm
Maximum Cutting Width	25-40MM/Can be customized according to needs
Qty of Roll channel	4-12 channels (Customized according to needs)
Suitable Thickness	Within 1.2mm (PET)
Silo Capacity	About 300 sheet
Cutting Speed	About 10 seconds (sheet)
CCD detection	7 sets of visual inspections covering all production conditions Can store photos from each production process.
impedance detection	Customized according to needs
Receiving materials way	Fully automatic collection, (labeled defective product, finished product silos)
Programming	Touch screen interface input (and remote assistance)
Machine Size	2660MM*2450MM*1950MM (The size may vary depending on the layout)
Gas Source	0.6Mpa (clean gas source)
Machine Weight	About 1220KG (based on the size of machine)
Electric Power Consume	3.2KVA
Electric Power	AC220V/50,60HZ

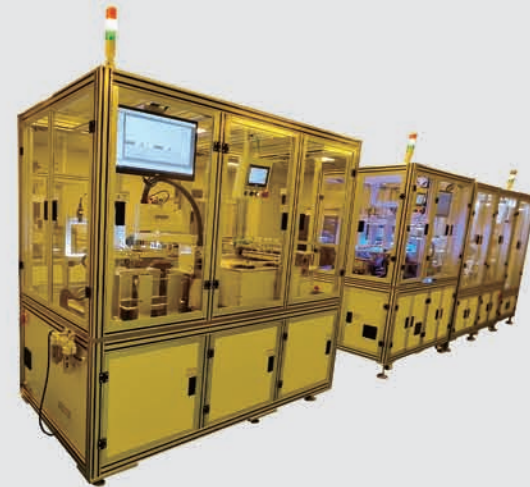
WM-211血糖试纸自动修边滚切机

WM-211 Automatic trimming and rolling cutting machine for blood glucose test strip

产品介绍 ▶

Product Introduction

- 1、本设备针对血糖试纸大卡生产研发而成的全自动条形滚切设备。
- 2、设备针对于无定位孔无标识产品，采用机械手自动上料、对电极线条进行测量和校正切割，特别是针对长度超过400毫米X400毫米以上版面，有累积误差的长条进行尺寸补偿。速度快，效率高、质量稳定，是生产企业非常理想的大规模化生产设备。
- 3、设备可针对外形尺寸进行二次修整。使生产过程中单片切割工位继续边定位，无需进行校正。能够加快后段单片切割效率。
- 4、采用美国进口D2合金刀片/或日本HSS高速合金钢刀片，具有很好的耐磨性，且经久耐用。可根据客户需要度钛处理，一般可使用2到3年无需要修磨。



1. The machine is a automatic strip rolling cutting machine developed for cutting blood glucose test strips sheet
2. The equipment is designed for products without positioning holes or markings, using a robotic arm for automatic feeding, measuring, correcting, and cutting electrode lines, especially for products with a length exceeding 400mm X 400mm, and compensating for accumulated errors in the length of the long strip. Fast speed, high efficiency, and stable quality make it an ideal large-scale production equipment for production enterprises.
3. The machine can perform secondary trimming on the appearance of the product, allowing the single cutting station to continue edge positioning during the production process without the need for calibration. It can accelerate the efficiency of single piece cutting in the later stage.
4. Using D2 alloy blades from the United States or F2A high-speed alloy steel blades from Japan, it has good wear resistance and durability. It can be estimated titanium treatment according to needs, which can generally be used for 2 to 3 years without wear and tear.

产品参数 ▶

Product parameters

型号	WM-211
工作台面行程	200mmX150mm-660mmX520mm 按照产品大小来确定工作台面
裁切精度	300mm以内误差±0.1mm (正确对位后的直线偏移) 滚切精度: ±0.05MM
外形尺寸	400MM*400MM误差±0.1MM
最大切片宽度	25-40/根据需要宽度定制
滚切通道(条数)	4-12道(按照客户需要定制)
适用厚度	1.2mm以内(PET材料)
存储料仓	约300片大版
前段连接接口	可连接前段贴合生产线
收料方式(定制)	可连接生产线输送或料仓收集
滚切速度	最高220转/分钟, 速度可调整
编程操作	触摸屏人机界面输入
机械尺寸	1960MM*1150MM*1950MM (根据版面不同设备尺寸会有变化)
气源	0.6Mpa(干净气源)
机械重量	约720KG(根据设备大小重量会有变化)
消费电力	3.2KW
使用电源	AC220V/50、60HZ

Model	WM-211
Work Table Route	200mm*150mm-660mm*520mm Can be customized according to size of product
Cutting Precision	±0.1mm (Within 300mm, Shifting after correct alignment) Roll cutting precision: ±0.05mm
Overall Size	400MM*400MM (±0.1MM)
Maximum Cutting Width	25-40mm/Can be customized according to needs
Qty of Roll channel	4-12 channels (Customized according to needs)
Suitable Thickness	Within 1.2mm (PET)
Silo Capacity	About 300 sheet
Front connection interface	Can connect to the front adhesion production line
Receiving materials way (customized)	Can be connected to the production line for conveying or silo collection
Roll Cutting Speed	Up to 220 rpm/min, (can be adjusted)
Programming	Touch screen interface input
Machine Size	1960MM*1150MM*1950MM (The size may vary depending on the layout)
Gas Source	0.6Mpa (clean gas source)
Machine Weight	About 720KG (based on the size of machine)
Electric Power Consume	3.2KW
Electric Power	AC220V/50,60HZ

Wm-220-LS血糖试纸半自动单片滚切入瓶机

WM-220-LS blood glucose test strip semi-automatic single piece rolling cutting machine with bottling function.

产品介绍 ▶

Product Introduction

- 1、本设备针对血糖试纸半自动切割装瓶研发而成的高精度滚切设备。
- 2、设备可选配光纤感应式，孔定位，边定位等多种定位方式，精确对位、设备自动校正。速度快，效率高、质量稳定，是生产企业非常理想的生产设备。
- 3、设备配有自动装瓶机构，操作人员按下装瓶按钮机器自动完成装瓶动作。可以配合CCD视觉检测系统，对切割成品进行切割质量和数量检测。更换生产产品类型时只需要更换一套组合式刀具，非常方便快捷。
- 4、采用美国进口D2合金刀片/或日本HSS高速合金钢刀片，具有很好的耐磨性，且经久耐用。可根据客户需要度钛处理，一般可使用2到3年无需要修磨。



1. This machine is a high-precision rolling cutting device developed for the semiautomatic cutting and bottling functions of blood glucose test strips.
2. The machine can choose multiple positioning methods such as fiber optic induction, hole positioning, edge positioning, etc., for precise alignment and automatic correction. Fast speed, high efficiency, and stable quality make it an ideal production equipment for production enterprises.
3. The machine is equipped with an automatic bottling device, the operator presses the bottling button then machine will automatically complete the bottling action. It can be used in conjunction with a CCD detection system to detect the quality and quantity of cut products. When changing product types, only one set of combination cutting tools needs to be replaced, which is very convenient and fast.
4. Using D2 alloy blades from the United States or F2A high-speed alloy steel blades from Japan, it has good wear resistance and durability. It can be estimated titanium treatment according to needs, which can generally be used for 2 to 3 years without wear and tear.

产品参数 ▶

Product parameters

型号	WM-212-CB
工作台面行程	200mmX150mm-660mmX520mm 按照产品大小来确定工作台面
裁切精度	机械手配合视觉: 300mm以内误差±0.1mm
最大切割宽度	25-40MM/根据需要宽度定制
滚切通道(条数)	4-12道(按照客户需要定制)
适用厚度	1.2mm以内(PET材料)
存储料仓	约300片大版
切割速度	约10秒(大卡)
CCD检测	7组视觉检测覆盖全流程生产状况 可存储每一次生产过程中照片
阻抗检测	按产品需要定制
收料方式	全自动收集, (分标记料仓, 不良品料仓, 成品料仓)
编程操作	触摸屏人机界面输入 (以及远程协助)
机械尺寸	2660MM*2450MM*1950MM (根据版面不同设备尺寸会有变化)
气源	0.6Mpa(干净气源)
机械重量	约1220KG(根据设备大小重量会有变化)
消费电力	3.2KVA
使用电源	AC220V/50、60HZ

Model	WM-212-CB
Work table Route	200mmX150mm-660mmX520mm Can be customized according to size of product
Cutting Precision	Robot arm with visual coordination; error ±0.1mm within 300mm
Maximum Cutting Width	25-40MM/Can be customized according to needs
Qty of Roll channel	4-12 channels (Customized according to needs)
Suitable Thickness	Within 1.2mm (PET)
Silo Capacity	About 300 sheet
Cutting Speed	About 10 seconds (sheet)
CCD detection	7 sets of visual inspections covering all production conditions Can store photos from each production process.
impedance detection	Customized according to needs
Receiving materials way	Fully automatic collection, (labeled defective product, finished product silos)
Programming	Touch screen interface input (and remote assistance)
Machine Size	2660MM*2450MM*1950MM (The size may vary depending on the layout)
Gas Source	0.6Mpa (clean gas source)
Machine Weight	About 1220KG (based on the size of machine)
Electric Power Consume	3.2KVA
Electric Power	AC220V/50,60HZ

WM-220LZ-TS 血糖试纸自动单片立式滚切入瓶机

WM-220LZ-TS Automatic single piece vertical rolling and cutting machine for blood glucose test strips with bottling function

产品介绍 ▶ Product Introduction

- 1、本设备针对血糖试纸半自动切割装瓶研发而成的高精度滚切设备。
- 2、设备采用自动取料，自动对位、自动切割、切割完成后自动收集。速度快，效率高、质量稳定，是生产企业非常理想的生产设备。
- 3、设备可选配输送带或者直接入瓶机构，操作人员在输送带上进行不良品剔除或者补齐数量自动完成装瓶动作。可以配合CCD视觉检测系统，对切割成品进行切割质量和数量检测。更换生产产品类型时只需要更换一套组合式刀具，非常方便快捷。
- 4、采用美国进口D2合金刀片/或日本HSS高速合金钢刀片，具有很好的耐磨性，且经久耐用。可根据客户需要度钛处理，一般可使用2到3年无需要修磨。



- 1.This machine is a high-precision rolling cutting device developed for the semi-automatic cutting and bottling functions of blood glucose test strips.
- 2.The machine can automatically take materials, aligns and cuts automatically, and collects them automatically after the cutting is completed.Fast speed, high efficiency, and stable quality make it an ideal production equipment for manufactures.
- 3.The conveyor belt or direct bottling device can be selected, and the operator can automatically complete the bottling action by removing or replenishing defective products on the conveyor belt. It can be used in conjunction with the CCD detection to detect the cutting quality and quantity of finished products. When changing the type of production product, only one set of combination cutting tools needs to be replaced, which is very convenient and fast.
- 4.Using D2 alloy blades from the United States or F2A high-speed alloy steel blades from Japan, it has good wear resistance and durability. It can be estimated titanium treatment according to needs , which can generally be used for 2 to 3 years without wear and tear.

产品参数 ▶ Product parameters

型号	WM-220-LS
工作台面行程	200mm-460mm 按照产品大小来确定工作台面
滚切精度	线条误差±0.1mm 根据材质不同会有轻微的浮动
入瓶方式	人工放瓶设备自动入瓶
适用厚度	1.2mm以内
滚切对位方式	光纤扫描式/人工光学/孔定位/边定位
除静电功能	选配.可增加
CCD检测功能	选配.可增加
滚动效率	标准:210转每分钟,速度可调
编程操作	触摸屏人机界面输入
机械尺寸	1260MM*730MM*1700MM 根据设备工作台面的不同设备尺寸会有变化
气源	0.6Mpa(干净气源)
机械重量	约150KG
消费电力	1.3KW
使用电源	AC220V/50.60HZ

Model	WM-220-LS
Work Table Route	200mm-460mm Can be customized according to size of product
Cutting Precision	Line error ±0.1mm There may be slight fluctuations depending on the material
Bottling Way	Manually place the bottle, and the machine automatically loads product into the bottle
Suitable Thickness	Within 1.2mm
Roll Cutting Alignment Way	Fiber optic scanning/artificial optics/hole positioning/edge positioning
Static electricity removal function	Can be added
CCD Detection	Can be added
Rolling efficiency	220 rpm/min, (can be adjusted)
Programming	Touch screen interface input
Machine Size	1260MM*730MM*1700MM The size may vary depending on the layout
Gas Source	0.6Mpa (clean gas source)
Machine Weight	About 150KG
Electric Power Consume	1.3KW
Electric Power	AC220V/50,60HZ

WM-220-LZ诊断试纸全自动单片立式滚切机

WM-220-LZ Diagnostic test strip fully automatic single piece vertical rolling cutting machine

产品介绍 ▶ Product Introduction

- 1、本设备针对各类型试纸生产厂商研发而成的高精度高速度滚切设备。
- 2、设备采用自动取料，对表面印刷了特定标志、色块(如电极或其他线条)的试纸，由数字光纤扫描精确定位。速度快，效率高、质量稳定，是生产企业非常理想的生产设备。
- 3、设备更换生产产品类型时只需要更换一套组合式刀具，非常方便快捷。
- 4、设备收料端可配置不同的收料方式：料斗收集，接料板收集，输送带收集。针对干式化学试纸产生粉尘状况下可增加吸尘机构。



1. This machine is a high-precision and high-speed rolling cutting equipment developed for various test strip manufacturers.
2. This machine can automatically get materials and accurately locate test strip with specific markings and color blocks (such as electrodes or other lines) printed on the surface through digital fiber optic scanning. Fast speed, high efficiency, and stable quality make it an ideal production equipment for manufactures.
3. When changing product types, only one set of combination cutting tools needs to be replaced, which is very convenient and fast.
4. The receiving section can be connected to different receiving methods: hopper collection, receiving plate collection, and conveyor belt collection. The dust generation of dry chemical test strips can be improved by adding vacuum suction function.

产品参数 ▶ Product parameters

型号	WM-220-LZ
工作台面行程	200mm-460mm 按照产品大小来确定工作台面
滚切精度	对位精度:线条误差±0.1mm 根据材质不同会有轻微的浮动
料仓存放数量	300片
适用厚度	2mm以内
滚切对位方式	光纤感应式/边定位
除静电和吸尘功能	选配
滚动效率	标准:210转每分钟,速度可调
编程操作	触摸屏人机界面输入
机械尺寸	960MM*600MM*1200MM 根据设备工作台面的不同设备尺寸会有变化
气源	0.6Mpa(干净气源)
机械重量	约85-180KG
消费电力	1.4KW
使用电源	AC220V/50.60HZ

Model	WM-220-LZ
Work Table Route	200mm-460mm Can be customized according to size of product
Cutting Precision	Line error ±0.1mm There may be slight fluctuations depending on the material
Silo Capacity	300 Sheet
Suitable Thickness	Within 2mm
Roll Cutting Alignment Way	Fiber optic scanning /edge positioning
Static electricity removal function	Can be added
Rolling efficiency	220 rpm/min, (can be adjusted)
Programming	Touch screen interface input
Machine Size	960MM*600MM*1200MM The size may vary depending on the layout
Gas Source	0.6Mpa (clean gas source)
Machine Weight	About 85-180KG
Electric Power Consume	1.4 KW
Electric Power	AC220V/50,60HZ

WM-220-Z 血糖试纸桌面式自动单片滚切机

WM-220-Z Desktop automatic single piece rolling cutting machine for blood glucose test strips

产品介绍 ▶

Product Introduction

- 1、本设备针对血糖试纸小试需求研发而成的高精度高速度滚切设备。
- 2、设备可选配光纤感应式精确对位、设备自动校正。速度快，效率高、质量稳定，是生产企业非常理想的生产设备。
- 3、设备更换生产产品类型时只需要更换一套组合式刀具，非常方便快捷。
- 4、采用美国进口D2合金刀片/或日本HSS高速合金钢刀片，具有很好的耐磨性，且经久耐用。可根据客户需要度钛处理，一般可使用2到3年无需要修磨。



1. This device is a high-precision and high-speed rolling cutting device developed for the needs of blood glucose test strips
2. The machine can be equipped with fiber optic induction precise alignment and automatic calibration. Fast speed, high efficiency, and stable quality make it an ideal production equipment for manufacturers.
3. When changing the type of production product, only one set of combination cutting tools needs to be replaced, which is very convenient and fast.
4. Using D2 alloy blades from the United States or F2A highspeed alloy steel blades from Japan, it has good wear resistance and durability. It can be estimated titanium treatment according to needs, which can generally be used for 2 to 3 years without wear and tear.

产品参数 ▶

Product parameters

型号	WM-220-Z
工作台面行程	200mm-460mm 按照产品大小来确定工作台面
滚切精度	线条误差±0.1mm 根据材质不同会有轻微的浮动
料仓存放数量	300片
适用厚度	1.2mm以内
滚切对位方式	光纤感应式/孔定位/边定位
除静电功能	选配。可增加
滚动效率	标准:210转每分钟,速度可调
编程操作	触摸屏人机界面输入
机械尺寸	860MM*650MM*700MM 根据设备工作台面不同设备尺寸会有变化
气源	0.6Mpa(干净气源)
机械重量	约85-180KG
消费电力	1.3KW
使用电源	AC220V/50、60HZ

Model	WM-220-Z
Work Table Route	200mm-460mm Can be customized according to size of product
Cutting Precision	Line error ±0.1mm There may be slight fluctuations depending on the material
Silo Capacity	300 sheet
Suitable Thickness	Within 1.2mm
Roll Cutting Alignment Way	Fiber optic scanning/hole positioning/edge positioning
Static electricity removal function	Can be added
Rolling efficiency	220 rpm/min, (can be adjusted)
Programming	Touch screen interface input
Machine Size	860MM*650MM*700MM The size may vary depending on the layout
Gas Source	0.6Mpa (clean gas source)
Machine Weight	About 85-180KG
Electric Power Consume	1.3 KW
Electric Power	AC220V/50,60HZ

WM-220诊断试纸单片半自动滚切机

WM-220 Diagnosis test strip single piece semi-automatic rolling and cutting machine

产品介绍 ▶

Product Introduction

- 1、本设备针对诊断试纸小试需求研发而成的高精度滚切设备。
- 2、设备可选配光纤感应式，孔定位，边定位等多种定位方式，精确对位、设备自动校正。速度快，效率高、质量稳定，是生产企业非常理想的生产设备。
- 3、可以根据实际需求更换不同刀具，通用于各种电化学试纸，干化学试纸。
- 4、采用美国进口D2合金刀片/或日本HSS高速合金钢刀片，具有很好的耐磨性，且经久耐用。可根据客户需要度钛处理，一般可使用2到3年无需要修磨。

1. This device is a high-precision and high-speed rolling cutting device developed for the needs of blood glucose test strips
2. The machine can be equipped with fiber optic induction precise alignment and automatic calibration. Fast speed, high efficiency, and stable quality make it an ideal production equipment for manufacturers.
3. Different cutting tools can be replaced according to actual needs, which is universal for various electrochemical and dry chemical test strips.
4. Using D2 alloy blades from the United States or F2A high-speed alloy steel blades from Japan, it has good wear resistance and durability. It can be estimated titanium treatment according to needs, which can generally be used for 2 to 3 years without wear and tear.



产品参数 ▶

Product parameters

型号	WM-220单片切割立式机械
工作台面行程	200mm-460mm 按照产品大小来确定工作台面
滚切精度	线条误差±0.1mm 根据材质不同会有轻微的浮动
适用厚度	2.5mm以内
滚切对位方式	光纤感应式/人工光学/定位孔定位/边线定位 针对尿试条无标线等产品无需对位
除静电功能	选配。可增加
滚切效率	标准:210转每分钟,速度可调
编程操作	触摸屏人机界面输入
机械尺寸	860MM*630MM*1200MM 根据设备工作台面不同设备尺寸会有变化
气源	0.6Mpa(干净气源)
机械重量	约150KG
消费电力	1.2KW
使用电源	AC220V/50、60HZ

Model	WM-220 Single piece cutting vertical machinery
Work Table Route	200mm-460mm Can be customized according to size of product
Cutting Precision	Line error ±0.1mm There may be slight fluctuations depending on the material
Suitable Thickness	Within 2.5mm
Roll Cutting Alignment Way	Fiber optic scanning/artificial optics/hole positioning/edge positioning No need alignment for Urine test strip
Static electricity removal function	Can be added
Rolling efficiency	220 rpm/min, (can be adjusted)
Programming	Touch screen interface input
Machine Size	860MM*630MM*1200MM The size may vary depending on the worktop
Gas Source	0.6Mpa (clean gas source)
Machine Weight	About 150KG
Electric Power Consume	1.2KW
Electric Power	AC220V/50,60HZ

WM-225 血糖试纸高速单片切割生产线

WM-225 blood glucose test strip high-speed single piece cutting production line

产品介绍 ▶

Product Introduction

- 1、本设备针对血糖试纸生产厂商研发而成的高精度高速度全自动生产线。
- 2、设备由单片长条自动上料、自动对位滚切、自动剔除边角料。检测不良品，检测数量，自动收集、入瓶。称重复检，压盖，流出。是大规模化生产企业常理想的生产设备。
- 3、设备整线生产过程由12组CCD视觉进行监控和检测，入瓶完成后设备将再次称重复检，压盖完成后由视觉进行二次检测瓶盖和外观。
- 4、按照客户要求可增加滚刀快速更换功能，当出现粘胶现象时按下设备的自动换刀具功能，设备将自动更换另一组刀具，过程约5分钟，生产过程中不停顿。
- 5、设备配置25片装瓶和50片装瓶功能，25片装每分钟最高可达38瓶，50片装每分钟最高可达20瓶。可根据客户需求制定大容量料仓，存放约2000个瓶子。



1. This machine is a high-precision, high-speed, fully automatic production line developed for blood glucose test paper manufacturers.
2. This device automatically feeds, aligns and rolls, and removes scraps. It can detect defective products, measure quantities, automatically collect products for bottling, and can also be weighed for retesting, capping, and flowing out. It is an ideal choice for large-scale production of products.
3. The entire production process of the equipment is monitored and inspected by 12 sets of CCD cameras. After the bottling is completed, the equipment will be weighed and rechecked again. After the capping is completed, the bottle cap and appearance will be visually inspected for a second time.
4. According to customer requirements, the quick replacement function of the rolling cutter can be added. When there is adhesive phenomenon, press the automatic tool replacement function of the machine, and the machine will automatically replace another set of tools. The process takes about 5 minutes and does not stop during the production process.
5. The machine can pack bottles with capacities of 25 pcs and 50 pcs, with a maximum of 38 bottles/min for 25pcs and 20 bottles/min for 50 pcs. Large capacity silos can be developed according to customer needs, storing approximately 2000 bottles.

产品参数 ▶

Product parameters

型号	WM-225
工作台面行程	200mm-480mm 按照产品大小来确定工作台面
滚切精度	+/-0.1mm 根据材质不同会有轻微的浮动
刀具更换	选配
料仓容量	600长条
生产效率	25片/每分钟最高约38瓶 50片/每分钟最高约20瓶
滚切对位方式	CCD检测
数量检测	CCD检测
瓶子要求	分体式 and 一体式(根据需求定制)
复检称精度	0.01克
编程操作	触摸屏人机界面输入
机械尺寸	3900MM*1100MM*1950MM 不包含料仓带 根据设备工作台面不同设备尺寸会有变化
气源	0.6-0.8Mpa(干净气源)
机械重量	约2200KG
消费电力	4.7KW
使用电源	AC220V/50、60HZ

Model	WM-225
Work Table Route	200mm-480mm Can be customized according to size of product
Cutting Precision	±0.1mm There may be slight fluctuations depending on the material used
Tools Replacement	Can be added
Silo Capacity	600 Pieces
Production Efficiency	38 bottles/min for 25 pieces (Maximum) 20 bottles/min for 50 pieces (Maximum)
Roll Cutting Alignment Way	CCD Detection
Qty Detection	CCD Detection
Requirement for Bottle	Split and integrated (customized according to needs)
Rechecking Balance Precision	0.01g
Programming	Touch screen interface input
Machine Size	3900MM*1100MM*1950MM Not include silo size The size may vary depending on the layout
Gas Source	0.6-0.8Mpa (clean gas Source)
Machine Weight	About 2200KG
Electric Power Consume	4.7KW
Electric Power	AC220V/50,60HZ

WM-226 血糖试纸单片全自动切割生产线

WM-226 blood glucose test strip single piece fully automatic cutting production line

产品介绍 ▶

Product Introduction

- 1、本设备针对血糖试纸生产厂商研发而成带不良品剔除功能全自动生产线。
- 2、设备由单片长条自动上料、对位滚切、自动剔除边角料。检测不良品，剔除不良品，检测数量，补齐数量，自动收集、入瓶。称重复检，压盖，流出。是大规模化生产企业常理想的生产设备。
- 3、设备整线生产过程由12组CCD视觉进行监控和检测，入瓶完成后设备将再次称重复检，压盖完成后由视觉进行二次检测瓶盖和外观。
- 4、设备自动检测不良品，并且将不良品剔除，重新计算数量进行装瓶。
- 5、按照客户要求可增加滚刀快速更换功能，当出现粘胶现象时按下设备的自动换刀具功能，设备将自动更换另一组刀具，过程约5分钟，生产过程中不停顿。

1. This machine is a fully automatic production line with defect removal function developed for blood glucose test strip manufacturers.
2. This device automatically feeds, aligns and rolls, and removes scraps. It can detect defective products, measure quantities, automatically collect products for bottling, and can also be weighed for retesting, capping, and flowing out. It is an ideal choice for large-scale production of products.
3. The entire production process of the equipment is monitored and inspected by 12 sets of CCD cameras. After the bottling is completed, the equipment will be weighed and rechecked again. After the capping is completed, the bottle cap and appearance will be visually inspected for a second time.
4. The device can automatically detect defective products, remove them, recalculate the quantity, and then bottle them.
5. According to customer requirements, the quick replacement function of the rolling cutter can be added. When there is adhesive phenomenon, press the automatic tool replacement function of the machine, and the machine will automatically replace another set of tools. The process takes about 5 minutes and does not stop during the production process.



产品参数 ▶

Product parameters

型号	WM-226
工作台面行程	200mm-480mm 按照产品大小来确定工作台面
滚切精度	+/-0.1mm 根据材质不同会有轻微的浮动
刀具更换	选配
料仓容量	600长条
生产效率	25片/每分钟最高约25瓶 50片/每分钟最高约13瓶 根据不良品数量决定生产效率
滚切对位方式	CCD检测
数量检测	CCD检测
瓶子要求	分体式 and 一体式(根据需求定制)
复检称精度	0.01克
编程操作	触摸屏人机界面输入
机械尺寸	3700MM*1100MM*1950MM 不包含料仓 根据设备工作台面和料仓不同设备尺寸会有变化
气源	0.6-0.8Mpa(干净气源)
机械重量	约2200KG
消费电力	4.7KW
使用电源	AC220V/50、60HZ

Model	WM-226
Work Table Route	200mm-480mm Can be customized according to size of product
Cutting Precision	±0.1mm There may be slight fluctuations depending on the material used
Tools Replacement	Can be added
Silo Capacity	600 Pieces
Production Efficiency	38 bottles/min for 25 pieces (Maximum) 20 bottles/min for 50 pieces (Maximum) Efficiency based on Qty of rejection
Roll Cutting Alignment Way	CCD Detection
Qty Detection	CCD Detection
Requirement for Bottle	Split and integrated (customized according to needs)
Rechecking Balance Precision	0.01g
Programming	Touch Screen interface input
Machine Size	3700MM*1100MM*1950MM Not include silo The size may vary depending on the layout
Gas Source	0.6-0.8Mpa (Clean gas source)
Machine Weight	About 2200KG
Electric Power Consume	4.7KW
Electric Power	AC220V/50,60HZ

WM-230诊断试纸单片桌面式滚切机

WM-230 Diagnosis test strip single piece desktop rolling cutting machine

产品介绍 ▶

Product Introduction

- 1、本设备针对多层膜类干化学试纸生产厂商研发而成的小批量滚切设备。
- 2、设备由定位边和定位孔定位2种模式。是生产企业非常理想的辅助设备。
- 3、对多层膜类试纸在切割过程中无接触表面，无预压方式，切割刀口制作过程选择刀锋角度制作切割面平整，不会造成膜类边缘破碎，以及膜类变形。可根据客户要求对表面进行钛处理更加经久耐用。更换生产产品类型时只需要更换一套组合式刀具，非常方便快捷。



1. This rolling cutting equipment is developed for manufacturers of multi-layer dry chemical test strip.
2. There are two types of device positioning methods: positioning edges and positioning holes. It is an ideal auxiliary equipment for manufacturers.
3. For multi-layer film test strips, there is no contact with the surface during the cutting process and no prepressing. The production process selects the blade angle, and the cutting surface is very flat, which will not cause the edges of the film to break or deform. Surface titanium treatment can be carried out according to customer requirements for greater durability. When replacing the product, only one set of combination cutting tools needs to be replaced, which is convenient and fast.

产品参数 ▶

Product parameters

型号	WM-230
工作台面行程	200mm-460mm 按照产品大小来确定工作台面
滚切精度	线条误差±0.1mm 根据材质不同会有轻微的浮动
适用厚度	1.5mm以内
滚切对位方式	人工对位
除静电以及吸尘功能	选配。可增加
滚动效率	标准:210转每分钟,速度可调
编程操作	无需要编辑程序
机械尺寸	660MM*630MM*520MM 根据设备工作台面的不同设备尺寸会有变化
气源	0.6Mpa(干净气源)
机械重量	约75KG
消费电力	0.6KW
使用电源	AC220V/50、60HZ

Model	WM-230
Work Table Route	200mm-460mm Can be customized according to size of product
Cutting Precision	±0.1mm There may be slight fluctuations depending on the material used
Suitable Thickness	Within 1.5mm
Roll Cutting Alignment Way	Manual alignment
Static electricity removal function	Can be added
Rolling efficiency	220 rpm/min, (can be adjusted)
Programming	No need to edit program
Machine Size	660MM*630MM*520MM
Gas Source	The size may vary depending on the layout
Machine Weight	0.6Mpa (clean gas source)
Electric Power Consume	About 75KG
Electric Power	0.6KW
Electric Power	AC220V/50,60HZ

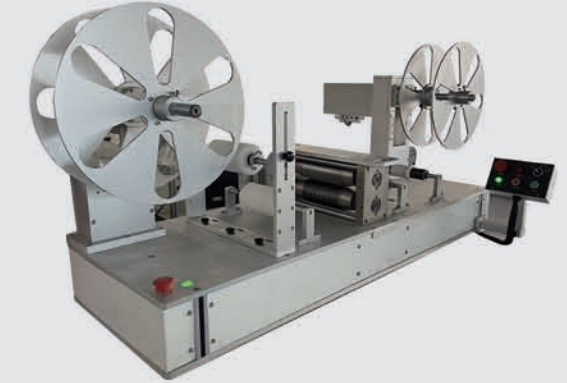
WM-231-JS 诊断试纸卷状膜材桌面式切割机

WM-231-JS Diagnostic test strip roll shaped membrane desktop cutting machine

产品介绍 ▶

Product Introduction

- 1、本设备针对干化学类型试纸膜类卷状切割生产研发而成的滚切设备。
- 2、设备原材料采用卷状模式。切割过程中放料和收料张力可根据实时进行调整，可切割不同的膜材，PET，双面胶类等材料，根据不同宽度定制不同刀具最小可切割3毫米宽度，是生产企业非常理想的辅助设备。
- 3、采用日本进口钨钢合金刀片，制作过程选择刀锋角度制作，避免滚割过程中直接接触材料表面，使滚切过程不会刮伤表面。刀具具有很好的耐磨性，可根据客户要求对表面进行钛处理更加经久耐用。更换生产产品类型时只需要更换一套组合式刀具，非常方便快捷。



1. This equipment is developed for roll cutting roll shaped dry chemical test strip membrane.
2. The raw materials are in rolls. During the cutting process, the feeding and receiving tension can be adjusted in real-time according to the actual situation. It can cut different membranes: PET, double-sided adhesive, etc. Different cutting tools can be customized according to different widths, the minimum cutting width is 3mm. It is an ideal auxiliary equipment for manufactures.
3. The machine uses tungsten steel alloy tools from Japan and selects the blade angle for cutting, avoiding scratches caused by direct contact with the product surface during the rolling cutting process. The cutting tools have good wear resistance and can be surface coated with titanium according to customer requirements, making them more durable. When replacing the product, only one set of combination cutting tools needs to be replaced, which is very convenient and fast.

产品参数 ▶

Product parameters

型号	WM-231-JS
工作台面行程	60mm-200mm, 150mm-300mm 按照产品大小来确定工作台面
滚切精度	误差±0.03mm 根据材质不同会有轻微的浮动
适用厚度	0.2mm以内
材料方式	卷状
切割通道	根据需求定制最大60条
切割宽度	根据需求定制3mm-20mm
张力控制	放料和收料单独可控制张力
滚动效率	标准:210转每分钟,速度可调
编程操作	无需要编辑程序
机械尺寸	1060MM*630MM*520MM 根据设备工作台面的不同设备尺寸会有变化
机械重量	约75KG
消费电力	0.6KW
使用电源	AC220V/50、60HZ

Model	WM-231-JS
Work Table Route	60mm-200mm, 150mm-300mm Can be customized according to size of product
Cutting Precision	±0.03mm There may be slight fluctuations depending on the material used
Suitable Thickness	Within 0.2mm
Tape of Material	Roll
Cutting Channel	Maximum 60 channels (can be customized according to needs)
Cutting Width	3mm-20mm (Can be Customized)
Tension Control	Can control the tension of feeding and receiving separately
Rolling Efficiency	220 rpm/min, (can be adjusted)
Programming	No need to edit the program
Machine Size	1060MM*630MM*520MM
Machine Weight	The size may vary depending on the layout
Machine Weight	About 75KG
Electric Power Consume	0.6KW
Electric Power	AC220V/50,60HZ

WM-231 诊断试纸半自动膜切割机

WM-231 Diagnostic test strip semi-automatic membrane cutting machine

产品介绍 ▶

Product Introduction

- 1、本设备针对干化学类型试纸片状膜类切割生产研发而成的滚切设备。
- 2、设备原材料采用片状模式。可切割不同的膜材，PET，双面胶等材料，根据不同宽度定制不同刀具最小可切割3毫米宽度，是生产企业非常理想的辅助设备。
- 3、采用日本进口合金刀片具，制作过程选择刀锋角度制作，避免滚割过程中直接接触材料表面，使滚切过程不会刮伤表面。刀具具有很好的耐磨性，可根据客户要求表面度钛处理更加经久耐用。更换生产产品类型时只需要更换一套组合式刀具，非常方便快捷。



1. This machine is developed for cutting dry chemical test strip membrane.
2. The raw materials are in sheet. It can cut different membranes: PET, double-sided adhesive, etc. Different cutting tools can be customized according to different widths, the minimum cutting width is 3mm. It is an ideal auxiliary equipment for manufactures.
3. The machine uses tungsten steel alloy tools from Japan and selects the blade angle for cutting, avoiding scratches caused by direct contact with the product surface during the rolling cutting process. The cutting tools have good wear resistance and can be surface coated with titanium according to customer requirements, making them more durable. When replacing the product, only one set of combination cutting tools needs to be replaced, which is very convenient and fast.

产品参数 ▶

Product parameters

型号	WM-231
工作台面行程	60mm-200mm, 150 mm -300 mm
	按照产品大小来确定工作台面
滚切精度	切割误差+/-0.03mm 根据材质不同会有轻微的浮动
适用厚度	0.2mm以内
材料方式	片状
切割通道	根据需求定制最大60条
切割宽度	根据需求定制3mm-20mm
滚动效率	标准:210转每分钟,速度可调
编程操作	无需要编辑程序
机械尺寸	760MM*630MM*520MM
	根据设备工作台面的不同设备尺寸会有变化
机械重量	约75KG
消费电力	0.3KW
使用电源	AC220V/50.60HZ

Model	WM-231
Work Table Route	60mm-200mm, 150 mm -300 mm
	Can be customized according to size of product
Cutting Precision	±0.03mm There may be slight fluctuations depending on the material used
Suitable Thickness	Within 0.2mm
Tape of Material	Sheet
Cutting channels	Maximum 60 channels (can be customized according to needs)
Cutting Width	3 mm-20 mm (Can be Customized)
Rolling Efficiency	220 rpm/min, (can be adjusted)
Programming	No need to edit the program
Machine Size	760MM*630MM*520MM
	The size may vary depending on the layout
Machine Weight	About 75KG
Electric Power Consume	0.3KW
Electric Power	AC220V/50,60HZ

WM-232 诊断试纸单片桌面式滚切机

WM-232 Diagnostic test strip single piece desktop rolling cutting machine

产品介绍 ▶

Product Introduction

- 1、本设备针对各类型试纸生产厂商小试阶段研发而成的可调整滚切设备。
- 2、设备可根据不同类型试条定制不同切割方式刀具。是生产企业非常理想的辅助设备。
- 3、对特定标志、色块的试纸，由人工光学对位，操作非常方便。
- 4、针对不同类型试纸可定制不同的接料方式。更换生产产品类型时只需要更换一套组合式刀具，非常方便快捷。

1. This machine is an adjustable roll cutting device developed for various types of test paper manufacturers during the trial stage
2. The machine can customize different cutting tools according to different test strips. It is an ideal auxiliary equipment for production enterprises.
3. For test strips with specific markings and color blocks, manual optical alignment is very convenient to operate.
4. Different feeding methods can be customized for different test strips. When replacing the product, only one set of combination cutting tools needs to be replaced, which is very convenient and fast.



产品参数 ▶

Product parameters

型号	WM-232
工作台面行程	200mm-460mm 按照产品大小来确定工作台面
滚切精度	线条误差+/-0.1mm根据材质不同会有轻微的浮动
适用厚度	2.5mm以内
滚切对位方式	人工光学对位 定位孔定位 吧边线定位
收料方式	定制
切割刀具	平面刀/斜面刀/锋利刀/异型刀(根据需求定制)
滚动效率	标准:210转每分钟,速度可调
编程操作	无需要编辑程序
机械尺寸	660MM*630MM*520MM
	根据设备工作台面的不同设备尺寸会有变化
气源	0.6Mpa(干净气源)
机械重量	约75KG
消费电力	0.6KW
使用电源	AC220V/50.60HZ

Model	WM-232
Work Table Route	200mm-460mm
	Can be customized according to size of product
Cutting Precision	Error: ±0.1mm There may be slight fluctuations depending on the material
Suitable Thickness	Within 2.5mm
Roll Cutting Alignment Way	Artificial optics/hole positioning/edge positioning
Material receiving method	Be Customized
Cutting Tools	Flat knife/inclined knife/sharp knife/irregular knife (customized according to needs)
Rolling Efficiency	220 rpm/min, (can be adjusted)
Programming	No need edit program
Machine Size	660MM*630MM*520MM
	The size may vary depending on the worktop
Gas Source	0.6Mpa (clean gas source)
Machine Weight	About 75KG
Electric Power Consume	0.6KW
Electric Power	AC220V/50,60HZ

WM-401-LS立式多通道自动微量点液喷涂机

WM-401-LS Vertical multi-channel automatic microscale liquid dispensing machine

产品介绍 ▶

Product Introduction

- 1、本设备针对生物芯片、生物传感器等各类需要喷涂点液试剂产品研发而成。
- 2、设备可定制外部安装密封保护罩，内部安装温湿度控制仪以保证机器内部适合生产产品的环境要求。
- 3、设备配置独立的三坐标系统，针对不同的产品可独立设置线状，圆形，阵列等不同规格的产品喷涂。
- 4、设备有总线通信方式控制器。针对客户定制可增加CCD检测和定位等各种功能。
- 5、喷雾阀清洗方便，清洗过程设备自动完成，道管路、点针等配件均可自行拆卸清洗，安装方便快捷。设备使用过程中只有极少部分耗材产生，耗材均为标准件使用成本极低。



1. This machine is developed for various products that require dispensing reagents, such as biochips and biosensors.
2. We can customize a sealed protective cover for the machine and install a temperature and humidity controller inside to ensure that the machine is suitable for the production environment.
3. The machine has an independent three coordinate system, and different dispensing methods such as linear, circular, and array can be set for different products.
4. The machine has a controller for bus communication. Various functions such as CCD detection and positioning can be added.
5. The machine can automatically clean the spray valve. Accessories such as pipeline and needle can be disassembled and cleaned by oneself, making installation convenient and fast. There are very few consumables generated during using, and the consumables are all standard parts with extremely low costs.

产品参数 ▶

Product parameters

型号	WM-401-LS
工作台面行程	100mm-600mm 按照产品大小来确定工作台面
坐标误差	±0.02MM
点样全行程准确度	< 2%
点样全行程精确度	≤3%
回吸装置	可以选择
清洗功能	设备自动完成清洗
通道数	1-5个
注射器规格	50 μL 到50 mL 之间
标准分配/抽吸精度	6000 个步进值
微步分配/抽吸精度	18000 个步进值
精密度	<2%
准确度	<3.0%
点样量	500NL-5UL
吐出速度	最高每秒3-5次
雾化面积	根据需要定制2MM-12MM
坐标移动速度	最高15米/分钟
控制系统	运动控制器
CCD检测	可增加(选配)
扩展功能	提供通信接口以便未来建立生产线(选配)
编程操作	触摸屏人机界面输入
去除静电功能	可增加(选配)
设备尺寸	960MM*960MM*1950MM(行程不同设备尺寸会有改变)
使用电力	220V 50/60HZ 消费电力: 1.7KW
气源	0.6-0.8PPM(选配)
重量	约160公斤

Mode	WM-401-LS
Work Table Route	100mm-600mm Can be customized according to size of product
Coordinate Error	±0.02MM
Full sheet Precision	≤3%
Suck-back device	Can be added
Clean Function	Automatic
Channel	1-5 channels
Specification Of syringe	Between 50 μL to 50 mL
Standard Dispensing / Aspiration Accuracy	6000 dot values
Micro-dispensing Allocation / Aspiration Accuracy	18000 dot values
Dispensing volume	500NL-5UL
Dispensing speed	Max 3-5 times/second
Atomization Area	2MM-12MM can be customized according to requirement
Coordinate movement speed	Max 15 meters / min
Control System	Motion controller
CCD detection	Can be added
Extended Function	Provide communication interface to facilitate the future establishment of production lines (can be added)
Programming	Touch screen interface input
Static electricity remove function	Can be added
Machine Size	960MM*960MM*1950MM (Size will be vary according to different product)
Electric Power	220V 50/60HZ Electric Power Consume: 1.7KW
Gas Source	0.6-0.8PPM (can be added)
Machine Weight	About 160 KG

WM-401-LZ 立式自动极微量点液机

WM-401-LZ Vertical automatic microscale liquid dispensing machine

产品介绍 ▶

Product Introduction

- 1、本设备针对生物芯片、生物传感器等产品微量点样研发而成。
- 2、设备可定制外部安装密封保护罩，内部安装温湿度控制仪以保证机器内部适合生产产品的环境要求。
- 3、设备可针对不同试剂粘度和特性定制不同的泵和阀，以保证精密点样。
- 4、设备可配置1-25通道，多通道使用时可单独设置不同通道，不同剂量的试剂，相互之间通道完全独立，上样过程试剂完全分离不会造成交叉感染。
- 5、点针或者喷射阀清洗方便，清洗过程设备自动完成，道管路、点针等配件均可自行拆卸清洗，安装方便快捷。设备使用过程中只有极少部分耗材产生，耗材均为标准件使用成本极低。



1. This machine is developed for various products that require dispensing reagents, such as biochips and biosensors.
2. We can customize a sealed protective cover for the machine and install a temperature and humidity controller inside to ensure that the machine is suitable for the production environment.
3. The machine can be customized with different pumps and valves based on the viscosity and characteristics of the reagents to ensure accurate dispensing.
4. The machine can be configured with 1-25 channels, and multiple channels can be used simultaneously. Each channel parameter can be set separately, and the reagents can be completely separated during the dispensing process without causing cross infection.
5. The machine can automatically clean the dispensing valve. Accessories such as pipeline and needle can be disassembled and cleaned by oneself, making installation convenient and fast. There are very few consumables generated during using, and the consumables are all standard parts with extremely low costs.

产品参数 ▶

Product parameters

型号	WM-401-LZ
工作台面行程	100mm-600mm 按照产品大小来确定工作台面
坐标误差	±0.02MM
点样全行程准确度	< 2%
点样全行程精确度	≤1%
回吸装置	可以选择
清洗功能	设备自动完成清洗
通道数	1-5个
注射器规格	50 μL 到50 mL 之间
标准分配/抽吸精度	6000 个步进值
微步分配/抽吸精度	18000 个步进值
精密度	<1%
准确度	<2.0%
点样量	200NL-5UL
吐出速度	可根据需求定制(最高25个通道)
坐标移动速度	2-100次/秒(根据不同阀和泵速度会有变化)
控制系统	运动控制器
CCD检测	可增加(选配)
扩展功能	提供通信接口以便未来建立生产线(选配)
编程操作	触摸屏人机界面输入
去除静电功能	可增加(选配)
设备尺寸	960MM*960MM*1900MM(行程不同设备尺寸会有改变)
使用电力	220V 50/60HZ 消费电力: 1.7KW
气源	0.6-0.8PPM(选配)
重量	约190公斤

Model	WM-401-LZ
Work Table Route	100mm-600mm Can be customized according to size of product
Coordinate Error	±0.02MM
Accuracy of sampling throughout the entire journey	< 2%
Full sheet Precision	≤1%
Suck-back device	Can be added
Clean Function	Automatic
Specification Of syringe	Between 50 μL and 50 mL
Standard Dispensing / Aspiration Accuracy	6000 dot values
Micro-dispensing Allocation / Aspiration Accuracy	18000 dot values
Precision	<1%
Accuracy	<2.0%
Dispensing volume	200NL-5UL
Channel	Can be customized (Max 25 channels)
Dispensing speed	2-100 times/second (the speed will be vary according to the pumps and valves)
Coordinate movement speed	Max 15 meters / min
Control System	Motion controller
CCD detection	Can be added
Extended Function	Provide communication interface to facilitate the future establishment of production lines (can be added)
Programming	Touch screen interface input
Static electricity remove function	Can be added
Machine Size	960MM*960MM*1900MM (Size will be vary according to different product)
Electric Power	220V 50/60HZ Electric Power Consume: 1.7KW
Gas Source	0.6-0.8PPM (Can be added)
Machine Weight	About 190 KG

WM-401LZ-PS 立式自动多通道PCR微量点膜机

WM-401LZ-PS Vertical automatic multi-channel PCR dispensing machine

产品介绍 ▶

Product Introduction

- 1、本设备针对PCR产品生产厂商研发而成，针对于超过25通道试剂点液有绝对优势。
- 2、设备可定制外部安装密封保护罩，内部安装温湿度控制仪以保证机器内部适合生产产品的环境要求。设备配置独立的三坐标系统，针对不同的产品可独立设置线状，阵列点等不同规格的产品。
- 3、多通道使用时可单独设置不同通道，不同剂量，设备能够最多同时点32种不同剂量的试剂，相互之间通道完全独立，上样过程试剂完全分离不会造成交叉感染
- 4、点针清洗方便，清洗过程设备自动完成。各通道管路、点针等配件均可自行拆卸清洗，安装方便快捷。设备使用过程中只有极少部分耗材产生，耗材均为标准件使用成本极低。



1. This machine is developed for PCR product manufacturer and can be used to meet the demand for reagent dispensing of over 25 channels
2. We can customize a sealed protective cover for the machine and install a temperature and humidity controller inside to ensure that the machine is suitable for the production environment. The machine has an independent three coordinate system, and different dispensing methods such as linear, and array can be set for different products.
3. Multiple channels can be used simultaneously, and the machine can dispense up to 32 reagents at same time. The channels are completely independent, and the reagents are completely separated during the dispensing process without cross infection.
4. The machine can automatically clean the dispensing valve. Accessories such as pipeline and needle can be disassembled and cleaned by oneself, making installation convenient and fast. There are very few consumables generated during using, and the consumables are all standard parts with extremely low costs.

产品参数 ▶

Product parameters

型号	WM-401LZ-PS	Model	WM-401LZ-PS
工作台面行程	100mm-600mm 按照产品大小来定工作台面	Work Table Route	100mm-600mm Can be customized according to size of product
坐标误差	±0.02MM	Coordinate Error	±0.02MM
点样全行程准确度	< 2%	Accuracy of sampling throughout the entire journey	< 2%
点样全行程精确度	≤1%	Full sheet Precision	≤1%
回吸装置	可以选择	Suck-back device	Can be added
清洗功能	设备自动完成清洗	Clean Function	Automatic
注射器规格	50 μL 到 50 mL 之间	Specification Of syringe	Between 50 μL and 50 mL
标准分配/抽吸精度	6000 个步进值	Standard Dispensing / Aspiration Accuracy	6000 dot values
微步分配/抽吸精度	18000 个步进值	Micro-dispensing Allocation / Aspiration Accuracy	18000 dot values
精密度	<1%	Precision	<1%
准确度	<2.0%	Accuracy	<2.0%
点样量	200NL-1UL	Dispensing volume	200NL-1UL
通道数	最多32通道	Channel	Max 32 channels
吐出速度	2-100次/秒	Dispensing speed	2-10times / second
坐标移动速度	最高15米/分钟	Coordinate movement speed	Max 15 meters / min
控制系统	运动控制器	Control System	Motion controller
CCD检测	可增加 (选配)	CCD detection	Can be added
扩展功能	提供通信接口以便未来建立生产线 (选配)	Extended Function	Provide communication interface to facilitate the future establishment of production lines (can be added)
编程操作	触摸屏人机界面输入	Programming	Touch screen interface input
去除静电功能	可增加 (选配)	Static electricity remove function	Can be added
设备尺寸	1360MM*1060MM*1950MM(行程不同设备尺寸会有改变)	Machine Size	1360MM*1060MM*1950MM (Size will be vary according to different product)
使用电力	220V 50/60HZ 消费电力: 2.7KW	Electric Power	220V 50/60HZ Electric Power Consume: 2.7KW
气源	0.6-0.8PPM(选配)	Gas Source	0.6-0.8PPM (Can be added)
重量	约280公斤	Machine Weight	About 280 KG

WM-401桌面式微量喷点液机

WM-401 Desktop micro-dispensing machine

产品介绍 ▶

Product Introduction

- 1、本设备针对各类试纸需要精确点样产品研发而成。
- 2、设备可定制CCD视觉测量对表面印刷了特定标志、色块 (如电极或其他线条) 的产品进行精确定位。设备配置独立的三坐标系统，坐标拥有自动抬针功能，针对每个位置可设置不同高度的点液坐标。针对不同的产品可独立设置线状，圆形，阵列等不同规格的产品。针对不同的需求可以设置，1.单点.2划线.3.喷线.4.单点喷。
- 3、设备有总线通信方式控制器。最多可搭配25台泵，针对特殊客户定制可增加远程通信，以方便未来设备维护以及软件升级。
- 4、点针或者喷射阀清洗方便，清洗过程设备自动完成。各通道管路、点针等配件均可自行拆卸清洗，安装方便快捷。设备使用过程中只有极少部分耗材产生，耗材均为标准件使用成本极低。



1. This machine is developed for test strips that require accurate dispensing.
2. The machine can perform CCD detection and accurately locate products with specific markings and color blocks (such as electrodes or other lines) on the surface. The machine has an independent three coordinate system and automatic needle lifting function, which can set different coordinate values according to the height of the position. Different paths such as lines, circles, and arrays can be independently set for different products. It can also be set in various forms such as single point, marking, dispensing, and single point dispensing according to the product settings.
3. The machine has a bus communication controller, which can be used with up to 25 pumps. Remote communication can also be added for equipment maintenance and software upgrades.
4. The machine can automatically clean the dispensing valve. Accessories such as pipeline and needle can be disassembled and cleaned by oneself, making installation convenient and fast. There are very few consumables generated during using, and the consumables are all standard parts with extremely low costs.

产品参数 ▶

Product parameters

型号	WM-401	Model	WM-401
工作台面行程	100mm-600mm 按照产品大小来定工作台面	Work Table Route	100mm-600mm Can be customized according to size of product
坐标误差	±0.02MM	Coordinate Error	±0.02MM
点样全行程准确度	< 2%	Accuracy of sampling throughout the entire journey	< 2%
点样全行程精确度	≤1%	Full sheet Precision	≤1%
回吸装置	可以选择	Suck-back device	Can be added
清洗功能	设备自动完成清洗	Clean Function	Automatic
注射器规格	50 μL 到 50 mL 之间	Specification Of syringe	Between 50 μL and 50 mL
精密度	<1%	Precision	<1%
准确度	<2.0%	Accuracy	<2.0%
点样量	500NL-5UL	Dispensing volume	500NL-5UL
通道数	可根据需求定制 (最高25个通道)	Channel	Can be customized (Max 25 channels)
吐出速度	2-100次/秒 (根据不同阀和泵速度会有变化)	Dispensing speed	2-100 times/second (the speed will be vary according to the pumps and valves)
坐标移动速度	最高10米/分钟	Coordinate movement speed	Max 10 meters / min
控制系统	运动控制器	Control System	Motion controller
CCD检测	可增加 (选配)	CCD detection	Can be added
扩展功能	提供通信接口以便未来建立生产线 (选配)	Extended Function	Provide communication interface to facilitate the future establishment of production lines (can be added)
编程操作	触摸屏人机界面输入	Programming	Touch screen interface input
去除静电功能	可增加 (选配)	Static electricity remove function	Can be added
设备尺寸	760MM*550MM*600MM(行程不同设备尺寸会有改变)	Machine Size	760MM*550MM*600MM (Size will be vary according to different product)
使用电力	220V 50/60HZ 消费电力: 1.7KW	Electric Power	220V 50/60HZ Electric Power Consume: 1.7KW
重量	约75公斤	Machine Weight	About 75KG

WM-402干式化学法多通道点液机

WM-402 Dry chemical multi-channel liquid dispensing machine

产品介绍 ▶

Product Introduction

- 1、本设备针对干式化学法试纸膜点样工艺生产研发而成。
- 2、设备可定制外部安装密封保护罩，内部安装温湿度控制，以及光源，以保证机器内部适合生产产品的环境要求。
- 3、设备可自由增加通道数量，对于原料试剂可增加低温保存区域。设备坐标拥有自动抬针功能，针对每个位置可设置不同高度的点液坐标。
- 4、多通道使用时可单独设置不同通道，不同剂量，设备能够最多同时点5种不同剂量的试剂，相互之间通道完全独立，上样过程试剂完全分离不会造成交叉感染
- 5、点针清洗方便，清洗过程设备自动完成。多通道使用时可单独设置不同通道，不同剂量，各通道管路、点针等配件均可自行拆卸清洗，安装方便快捷。设备使用过程中只有极少部分耗材产生，耗材均为标准件使用成本极低。



1. This machine is developed for the dry chemical test strip dispensing process.
2. We can customize a sealed protective cover for the machine and install a temperature and humidity controller and light inside to ensure that the machine is suitable for the production environment.
3. The machine can add channels quantity, for reagent materials, a low-temperature storage area can be added. The machine has an automatic needle lifting function, which can set different coordinate values according to the height of the position.
4. The multiple channels can be used simultaneously. The device can simultaneously point up to 5 different doses of reagents, each channel parameter can be set separately, and the reagents can be completely separated during the dispensing process without causing cross infection.
5. The machine can automatically clean the dispensing valve. Accessories such as pipeline and needle can be disassembled and cleaned by oneself, making installation convenient and fast. There are very few consumables generated during using, and the consumables are all standard parts with extremely low costs.

产品参数 ▶

Product parameters

型号	WM-402	Model	WM-402
工作台面行程	100mm-600mm 按照产品大小来确定工作台面	Work Table Route	100mm-600mm Can be customized according to size of product
坐标误差	±0.02MM	Coordinate Error	±0.02MM
点样全行程准确度	< 2%	Accuracy of sampling throughout the entire journey	< 2%
点样全行程精确度	≤1%	Full sheet Precision	≤1%
回吸装置	可以选择	Suck-back device	Can be added
清洗功能	设备自动完成清洗	Clean Function	Automatic
注射器规格	50 μL 到50 mL 之间	Specification Of syringe	Between 50 μL and 50 mL
标准分配/抽吸精度	6000 个步进值	Standard Dispensing / Aspiration Accuracy	6000 dot values
微步分配/抽吸精度	18000 个步进值	Micro-dispensing Allocation / Aspiration Accuracy	18000 dot values
精密度	<1%	Precision	<1%
准确度	<2.0%	Accuracy	<2.0%
点样量	500NL-10UL	Dispensing volume	500NL-10UL
通道数	5通道	Channel	5 channels
吐出速度	2-7次/秒 (根据不同阀和泵速度会有变化)	Dispensing speed	2-7 times/second (the speed will be vary according to the pumps and valves)
坐标移动速度	最高15米/分钟	Coordinate movement speed	Max 15 meters / min
控制系统	运动控制器	Control System	Motion controller
编程操作	触摸屏人机界面输入	Programming	Touch screen interface input
设备尺寸	760MM*550MM*600MM(行程不同设备尺寸会有改变)	Machine Size	760MM*550MM*600MM (Size will be vary according to different product)
使用电力	220V 50/60HZ 消费电力: 1.7KW	Electric Power	220V 50/60HZ Electric Power Consume: 1.7KW
重量	约85公斤	Machine Weight	About 85 KG

WM-403-ZL 血糖试纸多通道自动定位微量点酶机

WM-403-ZL Blood glucose test strip multi-channel automatic positioning micro enzyme dispensing machine

产品介绍 ▶

Product Introduction

- 1、本设备针对生物芯片、生物传感器生产厂商研发而成。
- 2、设备可定制外部安装密封保护罩，内部安装温湿度控制仪以保证机器内部适合生产产品的环境要求。
- 3、设备配置CCD视觉对表面印刷了特定标志、色块(如电极或其他线条)的产品进行精确定位,设备配置独立的五坐标系统,针对不同的产品可独立设置线状,圆形,阵列等不同规格的产品。设备根据不同点样位置进行调整。点液完成后设备CCD进行自动检测点样结果。
- 4、点针或者喷射阀清洗方便,清洗过程设备自动完成 各通道管路、点针等配件均可自行拆卸清洗,安装方便快捷。设备使用过程中只有极少部分耗材产生,耗材均为标准件使用成本极低。



1. This machine is developed for various products that require dispensing reagents, such as biochips and biosensors.
2. We can customize a sealed protective cover for the machine and install a temperature and humidity controller inside to ensure that the machine is suitable for the production environment.
3. The machine can perform CCD detection and accurately locate products with specific markings and color blocks (such as electrodes or other lines) printed on the surface. The machine has an independent 5 coordinate system, which can set different coordinate values according to the height of the position. Different paths such as lines, circles, and arrays can be independently set for different products.
4. The machine can automatically clean the dispensing valve. Accessories such as pipeline and needle can be disassembled and cleaned by oneself, making installation convenient and fast. There are very few consumables generated during using, and the consumables are all standard parts with extremely low costs.

产品参数 ▶

Product parameters

型号	WM-403-ZL	Model	WM-403-ZL
工作台面行程	500mmX400mm以内	Work Table Route	Within 500mmX400mm
三坐标误差	±0.02MM	Coordinate Error	±0.02MM
校正坐标有效行程	15mmX15mm	Correct effective travel	15mmX15mm
CCD视觉误差	±0.03mm	CCD Detection Error	±0.03mm
回吸装置	可以选择	Suck-back device	Can be added
清洗功能	设备自动完成清洗	Clean Function	Automatic
注射器规格	50 μL 到1 mL 之间	Specification Of syringe	Between 50 μL and 1 mL
标准分配/抽吸精度	24000 个步进值	Standard Dispensing / Aspiration Accuracy	24000 dot values
微步分配/抽吸精度	48000 个步进值	Micro-dispensing Allocation / Aspiration Accuracy	48000 dot values
精密度	<1%	Precision	<1%
准确度	<2.0%	Accuracy	<2.0%
点样量	50NL-1UL	Dispensing volume	50NL-1UL
通道数	1-16通道	Channels	1-16 channels
通道参数	每个通道剂量可单独设置。	Channel Parameter	The reagent amount for each channel can be set separately.
吐出速度	2-100次/秒 (根据不同阀和泵速度会有变化)	Dispensing Speed	2-100 times/second (the speed will be vary according to the pumps and valves)
坐标移动速度	最高15米/分钟	Coordinate movement speed	Max 15 meters / min
控制系统	运动控制器	Control System	Motion Controller
CCD视觉	2套视觉进行坐标定位, 以及检测点样结果。	CCD Detection	2 sets of visual inspection equipment for coordinate positioning and detection
编程操作	触摸屏人机界面输入	Programming	Touch Screen interface input
设备尺寸	960MM*850MM*600MM(行程不同设备尺寸会有改变)	Machine Size	960MM*850MM*600MM (Size will be vary according to different product)
使用电力	220V 50/60HZ 消费电力: 1.7KW	Electric Power	220V 50/60HZ Electric Power Consume : 1.7KW
气源	0.6-0.8PPM (选配)	Gas Source	0.6-0.8PPM (Can be added)
重量	约180公斤	Machine Weight	About 180KG

WM-403 血糖试纸多通道微量喷点机

WM-403 Blood glucose test strip multi-channel micro dispensing machine

产品介绍 ▶

Product Introduction

- 1、本设备针对生物芯片、生物传感器生产厂商研发而成。
- 2、设备可定制外部安装密封保护罩，内部安装温湿度控制仪以保证机器内部适合生产产品的环境要求。
- 3、设备可定制CCD视觉对表面印刷了特定标志、色块（如电极或其他线条）的产品进行精确定位，设备配置独立的三坐标系统，针对不同的产品可独立设置线状，圆形，阵列等不同规格的产品。
- 4、点针或者喷射阀清洗方便，清洗过程设备自动完成 各通道管路、点针等配件均可自行拆卸清洗，安装方便快捷。设备使用过程中只有极少部分耗材产生，耗材均为标准件使用成本极低。



1. This machine is developed for various products that require dispensing reagents, such as biochips and biosensors.
2. We can customize a sealed protective cover for the machine and install a temperature and humidity controller inside to ensure that the machine is suitable for the production environment.
3. The machine can perform CCD detection and accurately locate products with specific markings and color blocks (such as electrodes or other lines) printed on the surface. The machine has an independent three coordinate system, different paths such as lines, circles, and arrays can be independently set for different products.
4. The machine can automatically clean the dispensing valve. Accessories such as pipeline and needle can be disassembled and cleaned by oneself, making installation convenient and fast. There are very few consumables generated during using, and the consumables are all standard parts with extremely low costs.

产品参数 ▶

Product parameters

型号	WM-403	Model	WM-403
工作台面行程	100mm-600mm 按照产品大小来确定工作台面	Work Table Route	100mm-600mm Can be customized according to size of product
坐标误差	±0.02MM	Coordinate Error	±0.02MM
点样全行程准确度	< 2%	Accuracy of sampling throughout the entire journey	< 2%
点样全行程精确度	≤1%	Full sheet Precision	≤1%
回吸装置	可以选择	Suck-back device	Can be added
清洗功能	设备自动完成清洗	Clean Function	Automatic
注射器规格	50 μL 到1 mL 之间	Specification Of syringe	Between 50 μL and 1 mL
标准分配/抽吸精度	24000 个步进值	Standard Dispensing / Aspiration Accuracy	24000 dot dot values
微步分配/抽吸精度	48000 个步进值	Micro-dispensing Allocation / Aspiration Accuracy Precision	48000 dot values <1%
精密度	<1%	Accuracy	<2.0%
准确度	<2.0%	Dispensing volume	50NL-1UL
点样量	50NL-1UL	Channel	1-16 channels
通道数	1-16通道	Channel Parameter	The reagent amount for each channel can be set separately.
通道参数	每个通道剂量可单独设置。	Dispensing Speed	2-100 times/second (the speed will be vary according to the pumps and valves)
吐出速度	2-100次/秒 (根据不同阀和泵速度会有变化)	Coordinate movement speed	Max 15 meters / min
坐标移动速度	最高15米/分钟	Control System	Motion Controller
控制系统	运动控制器	CCD Detection	Can be added
CCD定位	可增加 (选配)	Programming	Touch Screen interface input
编程操作	触摸屏人机界面输入	Machine Size	760MM*550MM*600MM (Size will be vary according to different product)
设备尺寸	760MM*550MM*600MM(行程不同设备尺寸会有改变)	Electric Power	220V 50/60HZ Electric Power Consume: 1.7KW
使用电力	220V 50/60HZ 消费电力: 1.7KW	Gas Source	0.6-0.8PPM (can be chosen)
气源	0.6-0.8PPM (选配)	Machine Weight	About 90KG
重量	约90公斤		

WM-404 血糖试纸交叉工位自动微量点酶机

WM-404 Blood glucose test strip cross station automatic micro dispensing machine

产品介绍 ▶

Product Introduction

- 1、本设备针对生物芯片、生物传感器生产厂商研发而成。设备设计2个交叉工位，不同工位进行交叉作业，提升生产以及检测效率。
- 2、设备可定制外部安装密封保护罩，内部安装温湿度控制仪以保证机器内部适合生产产品的环境要求。
- 3、设备配置CCD视觉对表面印刷了特定标志、色块（如电极或其他线条）的产品进行精确定位，设备配置独立的五坐标系统，针对不同的产品可独立设置线状，圆形，阵列等不同规格的产品。设备根据不同点样位置进行调整。点液完成后设备CCD进行自动检测点样结果。
- 4、点针或者喷射阀清洗方便，清洗过程设备自动完成 各通道管路、点针等配件均可自行拆卸清洗，安装方便快捷。设备使用过程中只有极少部分耗材产生，耗材均为标准件使用成本极低。



1. This machine is developed for various products that require dispensing reagents, such as biochips and biosensors. The machine has two cross workstations, which can improve production and testing efficiency.
2. We can customize a sealed protective cover for the machine and install a temperature and humidity controller inside to ensure that the machine is suitable for the production environment.
3. The machine can perform CCD detection and accurately locate products with specific markings and color blocks (such as electrodes or other lines) printed on the surface. The machine has an independent 5 coordinate system, which can set different coordinate values according to the height of the position. Different paths such as lines, circles, and arrays can be independently set for different products.
4. The machine can automatically clean the dispensing valve. Accessories such as pipeline and needle can be disassembled and cleaned by oneself, making installation convenient and fast. There are very few consumables generated during using, and the consumables are all standard parts with extremely low costs.

产品参数 ▶

Product parameters

型号	WM-404	Model	WM-404
工作台面行程	500mmX400mm以内	Work Table Route	Within 500mmX400mm
坐标误差	±0.02MM	Coordinate Error	±0.02MM
三坐标误差	±0.02MM	Correct effective travel	15mmX15mm
校正坐标有效行程	15mmX15mm	CCD Detection Error	±0.03mm
CCD视觉误差	±0.03mm	Suck-back device	Can be added
回吸装置	可以选择	Clean Function	Automatic
清洗功能	设备自动完成清洗	Specification Of syringe	Between 50 μL and 1 mL
注射器规格	50 μL 到1 mL 之间	Standard Dispensing / Aspiration Accuracy	24000 dot values
标准分配/抽吸精度	24000 个步进值	Micro-dispensing Allocation / Aspiration Accuracy Precision	48000 dot values <1%
微步分配/抽吸精度	48000 个步进值	Accuracy	<2.0%
精密度	<1%	Dispensing volume	50NL-1UL
准确度	<2.0%	Channels	1-16 channels
点样量	50NL-1UL	Channel Parameter	The reagent amount for each channel can be set separately.
通道数	1-16通道	Dispensing Speed	2-100 times/second (the speed will be vary according to the pumps and valves)
通道参数	每个通道剂量可单独设置。	Coordinate movement speed	Max 15 meters / min
吐出速度	2-100次/秒 (根据不同阀和泵速度会有变化)	Control System	Motion Controller
坐标移动速度	最高15米/分钟	CCD Detection	1 set of visual inspection equipment
控制系统	运动控制器	Programming	Touch Screen interface input
CCD视觉	1套视觉检测点样结果	Machine Size	1060MM*1250MM*1950MM (Size will be vary according to different product)
编程操作	触摸屏人机界面输入	Electric Power	220V 50/60HZ Electric Power Consume : 1.9KW
设备尺寸	1060MM*1250MM*1950MM(行程不同设备尺寸会有改变)	Gas Source	0.6-0.8PPM (选配)
使用电力	220V 50/60HZ 消费电力: 1.9KW	Machine Weight	About 280KG
气源	0.6-0.8PPM (选配)		
重量	约280公斤		

WM-410-LZ旋转式自动多通道微量点液机

WM-410-LZ Rotating automatic multi-channel micro liquid dispensing machine

产品介绍 ▶

Product Introduction

- 1、本设备针对生物芯片、生物传感器、光化学试纸生产厂商微量点液工艺研发而成。
- 2、设备可定制外部安装密封保护罩，内部安装温湿度控制仪以保证机器内部适合生产产品的环境要求，酶液体存放区域可定制低温空间，以及磁力搅拌安装架，以满足液体存放要求。
- 3、设备可定制圆盘式放料方式，定位孔进行产品进行精确定位，设备配有多工作工位，当设备进行喷点的同时，可同步进行上下物料，产品检测等多项功能。
- 4、设备有总线通信方式控制器。针对客户定制可增加远程通信，以方便未来设备维护以及软件升级。
- 5、点针或者喷射阀清洗方便，清洗过程设备自动完成。各通道管路、点针等配件均可自行拆卸清洗，安装方便快捷。设备使用过程中只有极少部分耗材产生，耗材均为标准件使用成本极低。



1. This machine is developed for manufacturers of biochips, biosensors, and photochemical test strips.
2. The machine can be equipped with an external sealing protective cover, and a temperature and humidity controller can be installed inside to ensure that the machine is suitable for production environment requirements. The enzyme liquid storage area can be equipped with low-temperature space and magnetic stirring rack to meet liquid storage requirements.
3. The machine can be customized with a disc type feeding method, and the positioning holes can accurately position the product. The machine is equipped with multiple workstations, and when dispensing, it also can up and down materials and detective product.
4. The machine has a bus communication mode controller. Remote communication can be added for equipment maintenance and software upgrades.
5. The machine can automatically clean the dispensing valve. Accessories such as pipeline and needle can be disassembled and cleaned by oneself, making installation convenient and fast. There are very few consumables generated during using, and the consumables are all standard parts with extremely low costs.

产品参数 ▶

Product parameters

型号	WM-410-LZ	Model	WM-410-LZ
工作台面行程	100mm-600mm 旋转式工位	Work Table Route	100mm-600mm Rotating workstation
坐标误差	±0.02MM	Coordinate Error	±0.02MM
点样全行程准确度	< 2%	Accuracy of sampling throughout the entire journey	< 2%
点样全行程精确度	≤1%	Full sheet Precision	≤1%
回吸装置	可以选择	Suck-back device	Can be added
清洗功能	设备自动完成清洗	Clean Function	Automatic
注射器规格	150 μL 到5mL 之间	Specification Of syringe	Between 150 μL and 5 mL
标准分配/抽吸精度	6000 个步进值	Standard Dispensing / Aspiration Accuracy	6000 dot dot values
微步分配/抽吸精度	18000 个步进值	Micro-dispensing Allocation / Aspiration Accuracy	18000 dot values
精密度	<1%	Precision	<1%
准确度	<2.0%	Accuracy	<2.0%
点样量	500NL-15UL	Dispensing volume	50NL-15UL
通道数	1-16通道	Channel	1-16 channels
吐出速度	2-100次/秒 (根据不同阀和泵速度会有变化)	Dispensing Speed	2-100 times/second (the speed will be vary according to the pumps and valves)
坐标移动速度	最高15米/分钟	Coordinate movement speed	Max 15 meters / min
控制系统	运动控制器	Control System	Motion Controller
CCD定位	可增加 (选配)	CCD Detection	Can be added
编程操作	触摸屏人机界面输入	Programming	Touch Screen interface input
去除静电功能	可增加 (选配)	Static electricity remove function	Can be added
设备尺寸	960MM*960MM*1900MM(行程不同设备尺寸会有改变)	Machine Size	960MM*960MM*1900MM (Size will be vary according to different product)
使用电力	220V 50/60HZ 消费电力: 1.7KW	Electric Power	220V 50/60HZ Electric Power Consume: 1.7KW
重量	约185公斤	Machine Weight	About 185 KG

WM-412 血糖试纸全自动点酶生产线

WM-412 Fully automatic enzyme dispensing production line for blood glucose test strips

产品介绍 ▶

Product Introduction

- 1、本设备针对电化学法各类试纸点酶工艺大批量生产研发而成的全自动化生产线。
- 2、设备全自动生产流程：自动上下料，自动定位，自动点酶，视觉检测不良品，标记不良品，成品直接输送至隧道炉或者电梯式烤箱。
- 3、设备可设置不同通道，不同剂量，最高可配置25个通道，设备配置锥形校正管，生产过程中点样量进行实时校正。
- 4、点针或者喷射阀清洗方便，清洗过程设备自动完成。各通道管路、点针等配件均可自行拆卸清洗，安装方便快捷。设备使用过程中只有极少部分耗材产生，耗材均为标准件使用成本极低。

1. This equipment is a fully automatic production line developed for the dispensing enzyme process of various electrochemical test strips
2. This machine is fully automatic production: automatic loading and unloading material, automatic positioning, automatic dispensing, visual inspection of defective products, marking of defective products, and direct transportation of finished products to tunnel furnaces or elevator style ovens.
3. The machine can be set with different channels and doses, and can be equipped with up to 25 channels. The equipment has a conical calibration tube that can perform real-time calibration on the dispensing volume during the production process.
4. The machine can automatically clean the dispensing valve. Accessories such as pipeline and needle can be disassembled and cleaned by oneself, making installation convenient and fast. There are very few consumables generated during using, and the consumables are all standard parts with extremely low costs.



产品参数 ▶

Product parameters

型号	WM-412	Model	WM-412
工作台面行程	450mmX450mm以内	Work Table Route	Within 450mmX450mm
坐标误差	±0.02MM	Coordinate Error	±0.02MM
点样全行程准确度	< 2%	Accuracy of sampling throughout Full sheet Precision	< 2% ≤1%
点样全行程精确度	≤1%	Full sheet Precision	≤1%
料仓容量	200张大卡	Solid Capacity	200 sheets
回吸装置	可以选择	Suck-back device	Can be added
清洗功能	设备自动完成清洗	Clean Function	Automatic
注射器规格	50 μL 到1 mL 之间	Specification Of syringe	Between 50 μL and 1 mL
标准分配/抽吸精度	24000 个步进值	Standard Dispensing / Aspiration Accuracy	24000 dot values
微步分配/抽吸精度	48000 个步进值	Micro-dispensing Allocation / Aspiration Accuracy	48000 dot values
精密度	<1%	Precision	<1%
准确度	<2.0%	Accuracy	<2.0%
点样量	500NL-5UL	Dispensing volume	500NL-5UL
通道数	5-25通道	Channels	5-25 channels
通道参数	每个通道剂量可单独设置。	Channel Parameter	The reagent amount for each channel can be set separately.
吐出速度	2-100次/秒 (根据不同阀和泵速度会有变化)	Dispensing Speed	2-100 times/second (the speed will be vary according to the pumps and valves)
坐标移动速度	最高15米/分钟	Coordinate movement speed	Max 15 meters / min
控制系统	运动控制器	Control System	Motion Controller
CCD视觉	进行坐标定位，以及检测点样结果	CCD Detection	Coordinate positioning and result detection.
标记	标记三坐标进行点颜色标记	Marker	Marked with color
输送连接	输送皮带连接	Connection and transmit	Conveyor Belt
出口对接	隧道炉或者电梯式烤箱	Outlet Connection	tunnel furnaces or elevator style ovens
编程操作	触摸屏人机界面输入	Programming	Touch screen interface input
设备尺寸	2560MM*1050MM*1950MM	Machine Size	2560MM*1050MM*1950MM
使用电力	220V 50/60HZ 消费电力: 3.7KW	Electric Power	220V 50/60HZ Electric Power Consume: 3.7KW
气源	0.6-0.8PPM	Gas Source	0.6-0.8PPM
重量	约980公斤	Machine Weight	About 980KG

WM-420 干式化学片式材料浸泡膜机

WM-420 Dry chemical sheet membrane dipping machine

产品介绍 ▶

Product Introduction

- 1、本设备针对干式化学试纸膜类小试和研发浸泡生产工艺研发而成。
- 2、设备可定制外部安装密封保护罩，内部安装温湿度控制仪以保证机器内部适合生产产品的环境要求。
- 3、设备可以调节适配2种容量的浸药槽体，可加热和制冷2种功能控制液体温度，设备配置自动液位传感器自动添加液体量。
- 4、设备采用滚轴自吸式单张上料方式。
- 5、设备滚轮采用铁氟龙材料清洁更加快速。

1. This machine is mainly used for small-scale testing and research and development of the soaking process of dry chemical test strip membrane.
2. The machine can be customized with an external installation sealed protective cover, and there is a temperature and humidity controller inside the equipment to ensure that the machine is suitable for the production environment.
3. The soaking tank of the machine can be adjusted to two capacities, and the liquid temperature can be controlled through heating and cooling. The equipment has an automatic liquid line sensor that can automatically add liquid.
4. The machine adopts a production method of roller+automatic adsorption with single sheet.
5. The rollers of the equipment are made of Teflon material, which can be cleaned more quickly.



产品参数 ▶

Product parameters

型号	WM-420	Model	WM-420
原材料物料宽度	300*300mm	Raw material width	300*300mm
试剂槽温度	2℃~50℃(定制)	Reagent Tank Temperature	2℃~50℃(定制)
浸药槽容量	500ML	Immersion Tank capacity	500ML
生产效率	每分钟最高3片	Production Efficiency	每分钟最高3片
编程操作	触摸屏人机界面输入	Programming	触摸屏人机界面输入
设备尺寸	660MM*460MM*450MM	Machine Size	660MM*460MM*450MM
使用电力	220V 50/60HZ 消费电力: 0.7KW	Electric Power	220V 50/60HZ Electric Power Consume: 0.7KW
重量	约80公斤	Machine Weight	约80公斤

WM-421干化学卷式浸泡膜机

WM-421 Dry chemical roll membrane dipping machine

产品介绍 ▶

Product Introduction

- 1、本设备针对干式化学试纸卷状膜类大批量浸泡生产工艺研发而成。
- 2、设备可以调节适配2种容量的浸药槽体，可加热和制冷2种功能控制液体温度，设备配置自动液位传感器自动添加液体量。
- 3、自带卷式干燥箱采用热风烘烤，风速可调整优化气流方向，干燥更加快速，设备收卷料采用精密扭力电机，速度可控，扭矩可设置避免收卷过程中松紧不一致。
- 4、干燥室门采用透明有机玻璃材料，生产过程中全程可视。设备滚轮采用铁氟龙材料清洁更加快速，独立抽风系统可对接外排风系统。
- 5、适用于各类型需要浸泡干燥物料。材料宽度30-180mm，定制型150-300mm通用。

1. This machine is developed for the soaking process of dry chemical roll membranes.
2. The soaking tank of the machine can be adjusted to two capacities, and the liquid temperature can be controlled through heating and cooling. The equipment has an automatic liquid line sensor that can automatically add liquid.
3. The drying oven adopts hot air baking, with adjustable wind speed and optimized airflow direction for faster drying. The equipment adopts a precision torque motor, with controllable speed and adjustable torque to avoid inconsistent tension during the winding process.
4. The door of the drying room is made of transparent organic glass, and the production process is visible. The rollers of the equipment use Teflon for faster cleaning, and the independent exhaust system can be connected to the external exhaust system.
5. The equipment is suitable for various materials that require soaking and drying. The material width is 30-180mm and can be customized to 150-300mm.



产品参数 ▶

Product parameters

型号	WM-421	Model	WM-421
原材料宽度	30-180mm, 150-300 mm	Raw Material Width	30-180mm, 150-300 mm
试剂槽温度	2℃~50℃(定制)	Reagent Tank Temperature	2℃~50℃(定制)
浸药槽容量	300-2000ML	Dipping Tank Capacity	300-2000ML
干燥温度	30-100℃热风循环式	Dry Temperature	30-100℃ Hot air circulation
干燥箱内温度误差	正负2℃	Temperature error inside the drier	±2℃
干燥箱内湿度	10%以下	Humidity of Drier	Lower than 10%
生产速度	200-6500MM/分钟	Production Speed	200-6500mm /min
最大外径	400mm	Maximum Diameter	400mm
收放卷扭力	可单独调整	Strength of collection and release	Can be adjusted
编程操作	触摸屏人机界面输入	Programming	Touch Screen interface input
设备尺寸	2030MM*660MM*1900MM	Machine Size	2030MM*660MM*1900MM
使用电力	380V50/60HZ 消费电力: 9.5KW	Electric Power	380V50/60HZ Electric Power Consume: 9.5KW
重量	约730公斤	Machine Weight	About 730KG

WM-460 冻干微球自动分装机

WM-460 Lyophilized bead automatic split charging machine

产品介绍 ▶

Product Introduction

- 1、本设备针对液氮冻干微球分装工艺研发而成。
- 2、设备定制安装密封保护罩，内部安装抽真空系统或者加氮气系统，以保证机器内部适合生产产品的环境要求。
- 3、设备配置CCD视觉系统，对整个面积区域内的冻干小球进行坐标定位，独立的三坐标系统，针对不同位置冻干球进行吸附分装。
- 4、针对不同管和装载体，设备可更换不同工装，分装无缝对接，设备预留自动化上料和下料通道，可使制造过程全自动化。



1. This machine is developed for the packaging process of liquid nitrogen lyophilized bead.
2. The machine can be equipped with a sealed protective cover and an internal vacuum pumping system or nitrogen addition system to ensure that the internal environment of the machine is suitable for product production.
3. The equipment is equipped with a CCD detection system to coordinate and locate the Lyophilized bead in the area. An independent three coordinate system can be used to package Lyophilized bead at different positions.
4. For different products, machines can seamlessly connect, and machine reserves automated loading and unloading channels, which can fully automate the manufacturing process.

产品参数 ▶

Product parameters

型号	WM-460	Model	WM-460
工作台面行程	100mm-300mm 按照产品大小来确定工作台面	Work Table Route	100mm-300mm The size can be customized according to product
坐标误差	±0.02MM	Coordinate Errors	±0.02MM
坐标电机	直线电机	Electric Motor	Linear motor
控制系统	运动控制器	Control System	Motion Controller
CCD检测	冻干球定位以及分装结果检测	CCD Detective	Lyophilized bead positioning and split charging detection
扩展功能	预留全自动化上下料通道	Extended Function	reserves automated loading and unloading channels
编程操作	触摸屏人机界面输入	Programming	Touch screen interface input
去除静电功能	区域内	Static Electricity Removal Function	Achievable within the zones
设备尺寸	960MM*750MM*1950MM(行程不同设备尺寸会有改变)	Machine Size	960MM*750MM*1950MM (The size will vary according to the route)
使用电力	220V 50/60HZ 消费电力: 2.7KW	Electric Power	220V 50/60HZ Electric Power Consume: 2.7KW
重量	约340公斤	Machine Weight	About 340KG

WM-461干式化学试纸半自动热压机

WM-461Semi-automatic hot press machine for dry chemical test strip

产品介绍 ▶

Product Introduction

- 1、本设备针对干式化学ALT等试纸，多层材料需要融入胶进行固定生产工艺研发而成。
- 2、设备多层材料溶胶时温度，压胶高度和角度可调节，且压胶平整，左右高度一致，速度快，效率高、质量稳定，是生产企业非常理想的生产设备。
- 3、针对不同产品工装放料时（各种材料）易操作，不易跑位、不偏移、物料放置平顺。
- 4、操作界面简单明了，不要反复翻转界面设置项目，逻辑符合人性思维，给人舒适、轻松的工作状态。

1. This machine is developed for dry chemical ALT and other test strips that require adhesive fixation between multiple layers of materials.
2. The temperature, pressing height, and angle of the multi-layer material sol in the machine can be adjusted, and the product is flat with consistent left and right heights. Fast speed, high efficiency, and stable quality make it an ideal equipment for manufacturers.
3. Easy to operate, not easy to move, not offset, and smoothly place materials for different product.(various materials)
4. The operation interface is simple, without the need for repeated project settings, and the logic conforms to human thinking, providing a comfortable and relaxed working state.



产品参数 ▶

Product parameters

型号	WM-461	Model	WM-461
热压次数	可根据客户的需求定制(多次)	Hot Pressing Times	Can be customized according to requirement
工作台版面	(基板)300mmX300mm以内	Work Table Route	(base plate) Within 300mmX300mm
加热模块	0-140度(可调整)	Heating Temperature	0-140°C (can be adjusted)
温度误差	±2°C	Temperature Error	±2°C
加压方式	气缸加压	Pressuring Way	Cylinder pressure
编程方式	触摸屏人机界面输入	Programming	Touch Screen interface input
气源	0.6Mpa	Gas Source	0.6Mpa
设备尺寸	长700MM宽700MM高1700MM	Machine Size	700MMX700MMX1700MM
消费电力	4.2KW	Electric Power Consume	4.2KW
重量	约200公斤	Machine Weight	About 200KG

WM-462干式化学试纸垫高层涂胶机

WM-462 Dry chemical test strip hot-melt adhesive coating machine

产品介绍 ▶

Product Introduction

- 1、本设备针对干式化学ALT试纸等，需要热熔胶垫高层涂胶工艺的生产研发而成。
- 2、设备针对基板上进行涂胶，设备独立的三坐标系统，针对不同的产品可独立设置线状，圆形，等不同线条进行涂胶，速度快，效率高、质量稳定，是生产企业非常理想的生产设备。
- 3、设备溶胶单独可设定温度，能够快速溶胶，温度保护时间功能，预防热熔胶发黄。
- 4、出胶阀可控制温度，和涂胶角度，胶阀清洗方便，清洗过程设备自动完成，通道管路、胶阀等配件均可自行拆卸清洗，安装方便快捷。设备使用过程中只有极少部分耗材产生，耗材均为标准件使用成本极低。



1. This device is developed for the hot-melt adhesive coating process of dry chemical ALT test strips.
2. The machine has an independent three coordinate system, which can be used to set up linear, circular, and other adhesive coating methods for products. It has fast speed, high efficiency, and stable quality, making it an ideal equipment for manufacturers.
3. The machine can set the temperature, quickly dissolve, and has temperature protection function, which can prevent the yellowing of hot melt adhesive.
4. The machine can control the temperature of the dispensing valve and the angle of gluing. The valve is easy to clean, and the cleaning process is automatically completed by the machine. Accessories such as pipeline and valves can be disassembled and cleaned by oneself, making installation convenient and fast. There are very few consumables generated during using, and the consumables are all standard parts with extremely low costs.

产品参数 ▶

Product parameters

型号	WM-462	Model	WM-462
工作台版面	(基板)500mmX300mm以内	Work Table Route	Within 500mmX300mm
生产效率	依照产品的工艺以及涂胶高度要效率会有变化	Production Efficiency	The efficiency may vary depending on the product process and coating height
胶桶容量	5L	Adhesive bucket Capacity	5L
溶胶速度	>1KG(5分钟)	Sol speed	>1KG(5 minutes)
最高溶胶温度	200度	Max Sol temperature	200°C
出胶压力	5 Mpa	Pressure extruding glue	5 Mpa
胶阀最小出胶量	0.5毫米线性	Minimum glue output	0.5mm
编程方式	触摸屏人机界面输入	Programming	Touch screen interface input
气源	0.6Mpa	Air Source	0.6Mpa
设备尺寸	长1200MM宽700MM高1700MM	Machine Size	1200MM*700MM*1700MM
消费电力	7.2KW	Electric Power Consume	7.2KW
重量	约200公斤	Machine Weight	About 200KG

WM-530-ZL干式化学试纸桌面式贴膜机

WM-530-ZL Dry chemical test strip desktop laminating machine

产品介绍 ▶

Product Introduction

- 1、本设备针对干式化学试纸多层贴合的生产工艺研发而成。
- 2、设备针对干式化学试纸网纱，滤血膜，显色膜，等不同材料，采用精确定位，所有放料轴和离型膜收料轴，实现单独扭力控制，使牵引过程中张力一致。设备能够实现自动化多种材料进行贴合，压合，切断等功能。速度快，效率高、质量稳定，是生产企业非常理想的生产设备。
- 3、针对不同工艺，设备采用卷式原材料，多达4道原材料进口。可同时贴合4种材料。
- 4、设备采用总线通信控制方式。调整简单，通过转动丝杆调节轮，使不同产品之间的转换变得简单、省时；智能控制，自动光电追踪，具备无物不贴膜，底卡到位自动切功能 具有生产计数功能，方便生产管理。



1. This machine is developed for the production process of multi-layer lamination of dry chemical test strip.
2. The machine can be used for materials such as mesh, blood filtration membranes, and color-developing membranes required for dry chemical test paper. It adopts precise positioning to achieve independent torque control on the unwinding shaft and membrane rewinding shaft to ensure consistent tension during the traction process. The equipment can laminate, press and cut a variety of materials. With fast speed, high efficiency and stable quality, it is an ideal equipment for manufacturers.
3. The machine uses roll-type materials and has up to 4 channels to entrance. Can laminate 4 kinds of materials at the same time.
4. The equipment adopts bus communication control method. By turning the screw adjustment wheel, the conversion between different products becomes simple and time-saving; the equipment can perform automatic photoelectric tracking, and has the functions of no membrane if no products, automatic cutting of the sheet in place, and counting of quantities, which facilitates production management.

产品参数 ▶

Product parameters

型号	WM-530-ZL	Model	WM-530-ZL
贴合通道	最高4种物料 (可根据客户的需求定制)	Laminating channel	Max 4 Channels (Can be customized)
生产效率	依照产品的工艺以及贴合要求，效率会有变化	Production Efficiency	Efficiency may vary depending on the production process and fit requirements of the product
工作台版面	(基板) 100mm以内	Work Table Size	Within 100mm
原材料进料方式	卷状原材料,底卡片状材料	Raw material feeding way	Roll materials, Sheet materials
不干胶隔离纸	手撕回收	Adhesive isolation paper	Manual recycling
定位方式	边线定位	Position Method	Edge positioning
长度计算	包含定长裁切。	Length Calculate	Includes fixed length cuts
贴合误差	±0.1mm	Adhesive error	±0.1mm
CCD检测	按照客户需求可增加。	CCD Detection	Can be added according to requirement
编程方式	触摸屏人机界面输入	Programming	Touch screen interface input
设备尺寸	长900MM宽500MM高650MM	Machine Size	900MM*500MM*650MM
消费电力	1.7KW	Electric Power Consume	1.7KW
重量	约160公斤	Machine Weight	About 160KG

WM-530干式化学试纸卷式贴膜机

WM-530 Dry chemical test strip roll laminating machine

产品介绍 ▶

Product Introduction

- 1、本设备针对干式化学试纸多层贴合的生产工艺研发而成。
- 2、设备针对干式化学试纸网纱，滤血膜，显色膜，等不同材料，采用精确定位，所有放料轴和离型膜收料轴，实现单独扭力控制，使牵引过程中张力一致。设备能够实现自动化多种材料进行贴合，压合，切断等功能。速度快，效率高、质量稳定，是生产企业非常理想的生产设备。
- 3、针对不同工艺，设备采用卷式原材料，多达6道原材料进出口。可同时贴合6种材料。
- 4、设备采用总线通信控制方式。调整简单，通过转动丝杆调节轮，使不同产品之间的转换变得简单、省时；智能控制，自动光电追踪，具备无物不贴膜，大卡到位自动切功能 具有生产计数功能，方便生产管理；
- 5、操作界面简单明了，不要反复翻转界面设置项目，逻辑符合人性思维，给人舒适、轻松的工作状态



1. This machine is developed for the production process of multi-layer lamination of dry chemical test strip.
2. The machine can be used for materials such as mesh, blood filtration membranes, and color-developing membranes required for dry chemical test paper. It adopts precise positioning to achieve independent torque control on the unwinding shaft and membrane rewinding shaft to ensure consistent tension during the traction process. The equipment can laminate, press and cut a variety of materials. With fast speed, high efficiency and stable quality, it is an ideal equipment for manufacturers.
3. The machine uses roll-type materials and has up to 6 channels to entrance. Can laminate 6 kinds of materials at the same time.
4. The equipment adopts bus communication control method. By turning the screw adjustment wheel, the conversion between different products becomes simple and time-saving; the equipment can perform automatic photoelectric tracking, and has the functions of no membrane if no products, automatic cutting of the sheet in place, and counting of quantities, which facilitates production management.
5. Easy to operate, providing a comfortable and relaxed working state.

产品参数 ▶

Product parameters

型号	WM-530	Model	WM-530
贴合通道	最高6种物料 (可根据客户的需求定制)	Laminating channel	Max 6 Channels (Can be customized)
生产效率	依照产品的工艺以及贴合要求, 效率会有变化	Production Efficiency	Efficiency may vary depending on the production process and fit requirements of the product
工作台版面	(基板) 100mm以内	Work Table Size	Within 100mm
原材料进料方式	卷状原材料	Raw material feeding way	Roll materials
不干胶隔离纸	自动回收	Adhesive isolation paper	Automatic recycling
定位方式	边线定位	Position Method	Edge positioning
长度计算	包含定长裁切。	Length Calculate	Includes fixed length cuts
贴合误差	±0.1mm	Adhesive error	±0.1mm
CCD检测	按照客户需求可增加	CCD Detection	Can be added according to requirement
编程方式	触摸屏人机界面输入	Programming	Touch screen interface input
设备尺寸	长2700MM宽1200MM高1950MM	Machine Size	2700MM*1200MM*1950MM
消费电力	3.2KW	Electric Power Consume	3.2KW
重量	约800公斤	Machine Weight	About 800KG

WM-531干式化学试纸片状材料贴合机

WM-531 Dry chemical test paper sheet material laminating machine

产品介绍 ▶

Product Introduction

- 1、本设备针对干式化学试纸产品需要贴合的生产工艺研发而成。
 - 2、设备针对干式化学试纸网纱，滤血膜，显色膜，等不同材料，人工进行定位，设备自动贴合是生产企业非常理想的生产设备。
 - 3、操作界面简单明了，不要反复翻转界面设置项目，逻辑符合人性思维，给人舒适、轻松的工作状态
1. This machine is developed for the production process of multi-layer lamination of dry chemical test strip.
 2. The equipment can laminate materials such as mesh, blood filtration membrane, color rendering membrane, etc. After manual positioning, the machine automatically laminating, making it an ideal equipment for manufacturers.
 3. Easy to operate, providing a comfortable and relaxed working state.



产品参数 ▶

Product parameters

型号	WM-531	Model	WM-531
贴合通道	3通道 (可根据客户的需求定制)	Laminating channel	3 Channels (Can be customized)
生产效率	依照产品的工艺以及贴合要求, 效率会有变化	Production Efficiency	Efficiency may vary depending on the production process and fit requirements of the product
工作台版面	(基板)300mm* 60mm以内	Work Table Size	Within 300mm* 60mm
原材料方式	片状原材料	Raw material feeding way	Sheet materials
定位方式	边线定位	Position Method	Edge positioning
贴合误差	±0.15mm	Adhesive error	±0.15mm
编程方式	触摸屏人机界面输入	Programming	Touch screen interface input
气源	0.6Mpa (干净气源并且需配合不少于1立方米的储气罐)	Gas Source	0.6Mpa (clean gas source, A storage tank of no less than 1cbm is required)
设备尺寸	长700MM宽400MM高450MM	Machine Size	700MM*400MM*450MM
消费电力	1.0KW	Electric Power Consume	1.0KW
重量	约70公斤	Machine Weight	About 70KG

WM-601尿试纸滤纸浸渍干燥机

WM-601 Urine test strip membrane dipping and dry machine

产品介绍 ▶

Product Introduction

- 1、本设备针对卷状滤纸原纸类大批量浸泡干燥生产工艺研发而成。
- 2.设备走纸滚轮可以自由选择不锈钢304材质或者聚四氟材质,经过用户特殊配制的药液,经过浸渍槽,经过干燥箱,可调温,调速,风量调节,并收卷,为滤纸用于下一步裁切的产品。
- 3.自带卷式干燥箱采用热风烘烤,风速可调整优化气流方向,干燥更加快速,设备收卷料采用精密扭力电机,速度可控,扭矩可设置避免收卷过程中松紧不一致。
- 4.干燥室门采用透明有机玻璃材料,生产过程中全程可视。独立抽风系统可对接外排风系统。



1. This equipment is developed for the dipping and drying process of rolled test strip.
2. The roller of them machine can be made of stainless steel 304 or polytetrafluoro material. The device can adjust temperature, speed, air volume, and roll up the material.
3. The roll drying oven adopts hot air baking, which can adjust the wind speed, optimize the airflow direction, and accelerate the drying speed. The machine adopts a precision torque motor, with controllable speed and adjustable torque to avoid inconsistent of test strip.
4. The door of the drying room is made of transparent organic glass, and the production process is visible. and the independent exhaust system can be connected to the external exhaust system..

产品参数 ▶

Product parameters

型号	WM-601	Model	WM-601
原材料宽度	150-300 mm	Raw Material Width	150-300 mm
浸渍槽容量	1L	Reagent Tank Temperature	1L
干燥温度	50-120℃热风循环式	Dry Temperature	50-120℃Hot air circulation
干燥箱内温度误差	正负2℃	Temperature error inside the drier	± 2℃
干燥箱内湿度	10%以下	Humidity of Drier	Lower than 10%
生产速度	30-100米/小时	Production Speed	30-100m/h
最大外径	400mm	Maximum Diameter	400mm
收放卷扭力	可单独调整	Strength of collection and release	Can be adjusted
编程操作	触摸屏人机界面输入	Programming	Touch Screen interface input
设备尺寸	2050MM*1000MM*1950MM	Machine Size	2050MM*1000MM*1950MM
使用电力	380V50/60HZ.消费电力: 19.5KW	Electric Powder	380V50/60HZ.,Electric Powder Consume: 19.5KW
重量	约750公斤	Machine Weight	About 750KG

WM-602尿试纸滤纸复合机

WM-602 Urine test paper laminating machine

产品介绍 ▶

Product Introduction

- 1、本设备针对尿试条滤纸多通道复合的生产工艺研发而成,设备能够实现完全自动化生产,无需要人工操作。
- 2.设备针对盘中的试纸卷条剥离双面胶离型纸,并经过定位轮,橡胶轮,压合于PET,PVC,各种材质,宽度的基板上,然后按照设置好的长度参数切断为需要的大板(大板长度可以任意设置满足于最终产品宽度为5mm或者4mm之试纸条)速度快,效率高、质量稳定,是生产企业非常理想的生产设备。
- 3.针对尿试条滤纸复合工艺,多达15道原材料入口。可同时贴合15道滤纸。
- 4.设备采用总线通信控制方式。针对特殊客户定制可增加CCD检测功能,对生产过程不良品进行控制。



1. This machine is developed for the multi-channel composite process of urine test strip, and can fully automate production without the need for manual operation.
2. The device can complete the stripping of double-sided adhesive release paper, and pass through positioning wheels, rubber wheels, and press it onto PET and PVC material boards. Then, according to the set length, it is cut into the required size (the length can be set arbitrarily, with a width of 5mm or 4mm as the test strip). The speed is fast, the efficiency is high, and the quality is stable, making it an ideal equipment for manufacturers.
3. The machine have 15 channels for raw material entrance. Can simultaneously adhere 15 layers of materials.
4. The machine adopts bus communication control mode. CCD detection can be added to control defective products during the production process.

产品参数 ▶

Product parameters

型号	WM-602	Model	WM-602
复合通道	15道	Laminating channel	15 channels
生产效率	1-6米/分钟	Production Efficiency	1-6 meters / min
适合尺寸	(基板)200mm以内	Work Table Size	Within 200mm
原材料	卷状原材料	Raw material feeding way	Roll material
不干胶隔离纸	自动回收	Adhesive isolation paper	Automatic recycling
长度计算	定长裁切。	Position Method	Fixed length cutting
贴合误差	±0.1mm	Length Calculate	±0.1mm
CCD检测	按照客户需求可增加。	Adhesive error	Can be added according to requirement
编程方式	触摸屏人机界面输入	CCD Detection	Touch screen interface input
气源	0.6Mpa (干净气源并且需配合不少于1立方米的储气罐)	Programming	0.6Mpa (Clean gas source with no less than 1 cbm of storage tank)
设备尺寸	长2500MM宽1000MM高1600MM	Machine Size	2500MM*1000MM*1600MM
消费电力	1.2KW	Electric Power Consume	1.2KW
重量	约800公斤	Machine Weight	About 800KG

WM-604尿试纸半自动滚切机

WM-604 urine test strip semi-automatic rolling and cutting machine

产品介绍 ▶

Product Introduction

- 1、本设备针对各尿试纸单片切割生产工艺研发而成的滚切设备。
- 2、设备切割料仓位，采用避光材料，并且安装抽尘机构，自动取料，边线定位。收料端采用输送带收集。速度快，效率高、质量稳定，是生产企业非常理想的生产设备。
- 3、设备刀具采用日本HSS高速合金钢刀片，具有很好的耐磨性，且经久耐用。可根据客户需要度钛处理。



1. This device is developed for various urine test paper single piece cutting processes.
2. The cutting material bin of the equipment is made of dark materials and equipped with dust extraction equipment, which can automatically extract materials and position the edges. The material collection part is collected using a conveyor belt. Fast speed, high efficiency, and stable quality are ideal equipment for manufacturers.
3. The cutting tools of the equipment are HSS high-speed alloy steel blades from Japan, which have good wear resistance and can be treated with titanium according to customer needs.

产品参数 ▶

Product parameters

型号	WM-604	Model	WM-604
工作台面行程	300mm	Work Table Route	300mm
滚切精度	误差±0.05mm根据材质不同会有轻微的浮动	Cutting Precision	±0.05mm There may be slight fluctuations depending on the material
料仓存放数量	200片	Silo Capacity	200 sheet
切割平面	平面0.15毫米以内	Cutting Thickness	Within 0.15mm
适用尺寸	60-130 mm	Suitable Size	60-130 mm
边料处理	边料自动剔除	Edge Material Processing	Automatic remove
滚切对位方式	边定位	Roll Cutting Alignment Way	Edge positioning
除静电和吸尘功能	选配	Static elimination and dust collection function	Can be added
滚切效率	标准: 210转每分钟, 速度可调	Rolling efficiency	210 rpm/min, (can be adjusted)
编程操作	触摸屏人机界面输入	Programming	Touch screen interface input
机械尺寸	960MM*600MM*1200MM 根据设备工作台面的不同设备尺寸会有变化	Machine Size	960MM*600MM*1200MM The size may vary depending on the layout
气源	0.6Mpa (干净气源)	Gas Source	0.6Mpa (clean gas source)
机械重量	约180KG	Machine Weight	About 180KG
消费电力	1.4KW	Electric Power Consume	1.4KW
使用电源	AC220V/50、60HZ	Electric Power	AC220V/50、60HZ

WM-605尿试纸自动切割装瓶机

WM-605 Urine test strip automatic roll cutting machine

产品介绍 ▶

Product Introduction

- 1、本设备针对各尿试纸单片切割装干燥剂装瓶生产工艺研发而成的设备。
- 2、设备整体安装外罩将整体机构包围在内，并且安装抽尘机构，进行控制粉尘，自动取料，边线定位。自动收集，自动投干燥剂，生产过程由CCD视觉进行监控。速度快，效率高、质量稳定，是生产企业非常理想的生产设备。
- 3、设备刀具采用日本HSS高速合金钢刀片，具有很好的耐磨性，且经久耐用。可根据客户需要度钛处理。
4. 瓶子上料采用平台式放料方式，一次可以放置500-600个瓶子。



1. This machine can be used for cutting various urine test strip sheets, filling desiccant, and bottling them.
2. The machine is equipped with an outer cover and dust extraction equipment, which can control dust, and can automatically complete tasks such as material retrieval, edge positioning, collection, and automatic dosing of desiccant. The production process is visually monitored by CCD vision. With fast speed, high efficiency and stable quality, it is an ideal equipment for manufacturers.
3. The cutting tools of the machine are HSS high-speed alloy steel blades from Japan, which have good wear resistance and can be treated with titanium according to customer needs.
4. The machine's platform can hold 500-600 bottles for one time.

产品参数 ▶

Product parameters

型号	WM-605	Model	WM-605
工作台面行程	300mm	Work Table Route	300mm
滚切精度	误差±0.05mm根据材质不同会有轻微的浮动	Cutting Precision	误差±0.05mm根据材质不同会有轻微的浮动
料仓存放数量	300片	Silo Capacity	300片
切割平面	平面0.15毫米以内	Cutting Plane	平面0.15毫米以内
适用尺寸	60-130 mm	Suitable Size	60-130 mm
适用瓶子	38-50 mm	Suitable Bottles	38-50 mm
边料处理	边料自动剔除	Rim Charge	Automatic elimination
噪音	小于70分贝	Noise	Lower than 70dB
除静电和吸尘功能	选配	Static elimination and dust collection function	Can be added
切割效率	每分钟16-18瓶 (100片包含干燥剂)	Cutting efficiency	16-18 bottles/min (100pcs/bottle including desiccant)
编程操作	触摸屏人机界面输入	Programming	Touch screen interface input
机械尺寸	4260MM*1800MM*1950MM 根据设备工作台面的不同设备尺寸会有变化	Machine Size	4260MM*1800MM*1950MM 根据设备工作台面的不同设备尺寸会有变化
气源	0.6Mpa (干净气源)	Gas Source	0.6Mpa (clean gas source)
机械重量	约880KG	Machine Weight	About 880KG
消费电力	3.4KW	Electric Power Consume	3.4KW
使用电源	AC220V/50、60HZ	Electric Power	AC220V/50、60HZ

WM-606 尿试纸全自动切割包装线

WM-606 Urine test strip full-automatic cutting packaging line

产品介绍 ▶

Product Introduction

- 1、本设备针对各尿试纸单片切割装干燥剂装瓶，封膜，旋盖 生产工艺研发而成的设备。
- 2、设备整体安装外罩将整体机构包围在内，并且安装抽尘机构，进行控制粉尘，自动取料，边线定位。自动切割收集，自动投干燥剂，自动封膜，自动旋盖，生产过程由CCD视觉进行监控。速度快，效率高、质量稳定，是生产企业非常理想的生产设备。
- 3、设备刀具采用日本HSS高速合金钢刀片，具有很好的耐磨性，且经久耐用。可根据客户需要度钛处理。
- 4、瓶子上料采用集料盒式放料方式，一次可以放置200个瓶子。生产过程中将空置集料盒和满料集料盒进行交替更换，操作方便，减少占地空间。



1. This machine can complete the cutting of various urine test strips, filling desiccant, bottling, sealing, capping and other production.
2. There is a protective cover on the outside of the machine, and dust extraction equipment is installed inside to control dust. The equipment can automatically complete material retrieval, edge positioning, cutting, collection, desiccant injection, film sealing, and cap buckling. The entire production process is visually detectable by CCD version. With fast speed, high efficiency and stable quality, it is an ideal equipment for manufacturers.
3. The cutting tools use HSS high-speed alloy steel blades from Japan, which have good wear resistance. Titanium treatment can be provided based on customer needs.
4. The machine can place 200 bottles at a time. During the production process, empty collection boxes and full collection boxes are replaced alternately, which is easy to operate and reduces space required.

产品参数 ▶

Product parameters

型号	WM-606	Model	WM-606
工作台面行程	300mm	Work Table Route	300mm
滚切精度	误差±0.05mm根据材质不同会有轻微的浮动	Cutting Precision	±0.05mm Can be customized according to size of product
料仓存放数量	300片	Silo Capacity	300sheet
切割平面	平面0.15毫米以内	Cutting Plane	Within 0.15mm
适用尺寸	60-130 mm	Suitable Size	60-130 mm
适用瓶子	38-50 mm	Suitable Bottles	38-50 mm
边料处理	边料自动剔除	Rim Charge	Automatic elimination
噪音	小于70分贝	Noise	Lower than 70dB
干燥剂	自动投放	Desiccant	Automatic pack
封口膜	电磁式封口(包含铝膜检测)	Sealing style	Electromagnetic sealing (including aluminum film detection)
旋盖	扭力可调节	Screw Cap	Torque force can be adjusted
除静电和吸尘功能	选配	Static elimination and dust collection function	Can be added
切割效率	每分钟16-18瓶(100片包含干燥剂)	Cutting efficiency	16-18 bottles/min (100pcs/bottle including desiccant)
编程操作	触摸屏人机界面输入	Programming	Touch screen interface input
机械尺寸	4700MM*2100MM*1950MM 根据设备工作台面的不同设备尺寸会有变化	Machine Size	4700MM*2100MM*1950MM The size may vary depending on the layout
气源	0.6Mpa(干净气源)	Gas Source	0.6Mpa (clean gas source)
机械重量	约1380KG	Machine Weight	About 1380KG
消费电力	5.4KW	Electric Power Consume	5.4KW
使用电源	AC220V/50、60HZ	Electric Power	AC220V/50、60HZ

WM-701诊断试剂半自动灌装封膜机

WM-701 Diagnostic reagent semi-automatic filling and sealing machine

产品介绍 ▶

Product Introduction

- 1、本设备针对诊断试剂灌装和封铝膜工艺研发而成，设备能够实现自动灌装，自动封铝膜，人工只需要上下物料的操作。
- 2、产能需求大时，可直接进行扩展成线体，增加定位工装和操作人员，使产能可达15000-18000人份每小时，速度快，效率高、质量稳定，是生产企业非常理想的生产设备。
- 3、操作界面简单明了，不要反复翻转界面设置项目，逻辑符合人性思维，给人舒适、轻松的工作状态



1. This machine is developed for the filling and sealing process of diagnostic reagents. The machine can realize automatic filling and automatic sealing, and requires manual loading and unloading of materials.
2. When product demand is high, it can be expanded into line operation, adding positioning tables and operators, so that the production capacity can reach 15,000-18,000 pcs/hour. It is fast, efficient, and has stable quality and it's an ideal equipment for manufacturers.
3. The operation interface is simple and clear, giving people a comfortable and relaxed working state.

产品参数 ▶

Product parameters

型号	WM-701	Model	WM-701
灌装通道	6工位	Filling channel	6 Workstations
生产效率	8秒一个流程(按照定位工装48个)	Production Efficiency	8 seconds/process (according to 48 fixtures)
流量精度	百分之5以内误差(根据需要灌装的液体粘度会有不同的误差)	Flow accuracy	Within 5% (Error depends on the viscosity of the liquid)
灌装泵	蠕动泵	Filling pump	Peristaltic pump
热封温度	0-160度(可调节)	Heat-seal temperature	0-160°C (can be adjusted)
灌装模式	三坐标移动	Filling mode	Three coordinate movement
编程方式	触摸屏人机界面输入	Programming	Touch screen interface input
气源	0.6Mpa	Gas Source	0.6Mpa
设备尺寸	长2000MM宽900MM高1600MM(单组)	Machine Size	2000MM*900MM*1600MM (Single)
消费电力	3.2KW	Electric Power Consume	3.2KW
重量	约300公斤	Machine Weight	About 300KG

WM-702诊断试剂全自动灌装封膜机

WM-702 diagnostic reagent fully automatic filling and sealing machine

产品介绍 ▶

Product Introduction

- 1、本设备针对诊断试剂灌装和封铝膜工艺研发而成，设备能够实现完全自动化上下料，自动灌装，自动封铝膜，自动检测不良品，自动剔除不良品等流程。
- 2、设备更换不同瓶子时，只需要更换定位工装和铝膜切割模具，速度快，效率高、质量稳定，是生产企业非常理想的生产设备。
- 3、操作界面简单明了，不要反复翻转界面设置项目，逻辑符合人性思维，给人舒适、轻松的工作状态将空置集料盒和满料集料盒进行交替更换，操作方便，减少占地空间。



1. This machine is developed for the filling and sealing process of diagnostic reagents. The machine can achieve automatic loading and unloading, filling, sealing aluminum film, detecting defective products, and removing defective products and other processes.
2. When replacing bottles, only the positioning fixture and aluminum film cutting mold need to be replaced, which is fast, efficient, and stable in quality, making it an ideal equipment for manufacturers.
3. The operation interface is simple and clear, giving people a comfortable and relaxed working state.

产品参数 ▶

Product parameters

型号	WM-702	Model	WM-702
灌装通道	6通道	Filling channel	6 channels
生产效率	4500-5000个	Production Efficiency	4500-5000 pcs
铝膜材料	卷状, 设备内模切	Aluminum film shape	Rolling
流量精度	百分之5以内误差(根据需要灌装的液体粘度会有不同的误差)	Flow accuracy	Within 5%(Error depends on the viscosity of the liquid)
灌装泵	蠕动泵	Filling pump	Peristaltic pump
热封温度	0-160度(可调节)	Heat-seal temperature	0-160°C (can be adjusted)
视觉检测	检测液量, 检测异物, 铝膜封口状态检测。	CCD Detection	Detect liquid volume, foreign matter, and sealing status
不良品处理	自动剔除	Remove Defective Products	Automatic
编程方式	触摸屏人机界面输入	Programming	Touch screen interface input
气源	0.6Mpa	Gas Source	0.6Mpa
设备尺寸	长2200MM宽1200MM高1950MM(单组)	Machine Size	2200MM*1200MM*1950MM(Single)
消费电力	3.2KW	Electric Power Consume	3.2KW
重量	约500公斤	Machine Weight	About 500KG

WM-703诊断试剂半自动灌装旋盖机

WM-703 diagnostic reagent semi-automatic filling and capping machine

产品介绍 ▶

Product Introduction

- 1、本设备针对诊断试剂灌装和旋盖工艺研发而成，设备能够实现自动灌装，自动旋盖，自动下料，人工只需要上物料的操作。
- 2、设备旋转式转盘工位，针对不同产品可直接切换定位工装和旋盖模，速度快，效率高、质量稳定，是生产企业非常理想的生产设备。
- 3、操作界面简单明了，不要反复翻转界面设置项目，逻辑符合人性思维，给人舒适、轻松的工作状态。



1. This equipment is developed for the filling and capping process of diagnostic reagents, and can automatically fill, capping, cutting, and loading materials that require manual operation.
2. The equipment uses a rotary turntable, can switch between positioning fixtures and rotary cover molds. It has fast speed, high efficiency, and stable quality, making it an ideal production equipment for manufacturers.
3. The operation interface is simple and clear, giving people a comfortable and relaxed working state.

产品参数 ▶

Product parameters

型号	WM-703	Model	WM-703
灌装通道	3通道	Filling channel	3 channels
生产效率	2000-2200个/小时	Production Efficiency	2000-2200 pcs/ hour
流量精度	百分之5以内误差(根据需要灌装的液体粘度会有不同的误差)	Flow accuracy	Within 5%(Error depends on the viscosity of the liquid)
灌装泵	蠕动泵	Filling pump	Peristaltic pump
旋盖扭力	机械调节	Torque of Screw Cap	mechanical adjustment
编程方式	触摸屏人机界面输入	Programming	Touch screen interface input
气源	0.6Mpa	Gas Source	0.6Mpa
设备尺寸	长1200MM宽1000MM高1600MM	Machine Size	1200MM*1000MM*1600MM
消费电力	1.2KW	Electric Power Consume	1.2KW
重量	约240公斤	Machine Weight	About 240 KG

WM-703-8诊断试剂多通道高速灌装旋盖机

WM-703-8 Diagnostic reagent multi-channel high-speed filling and capping machine

产品介绍 ▶

Product Introduction

- 1、本设备针对诊断试剂灌装和旋盖工艺研发而成，设备能够实现完全自动化上下料，自动灌装，自动旋盖，自动检测不良品，自动剔除不良品等流程。
- 2、设备更换不同瓶子时，只需要更换定位工装和旋盖模具，8个通道单独控制，CCD检测产品灌装状态，旋盖状态，不良品设备自动剔除，速度快，效率高、质量稳定，是生产企业非常理想的生产设备。
- 3、操作界面简单明了，不要反复翻转界面设置项目，逻辑符合人性思维，给人舒适、轻松的工作状态空置集料盒和满料集料盒进行交替更换，操作方便，减少占地空间。



1. This machine is developed for the filling and capping process of diagnostic reagents. The equipment can automatically load and unload, fill, cap, detect defective products, reject defective products and other processes.
2. When changing different bottles, you only need to change the positioning tooling and capping mold. The 8 channels are equipped with independent controllers. The CCD detection can detect the filling status and capping status of the product. It has fast speed, high efficiency and stable quality, making it an ideal equipment for manufacturers.
3. The operation interface is simple and clear, giving people a comfortable and relaxed working state.

产品参数 ▶

Product parameters

型号	WM-703-8	Model	WM-703-8
灌装通道	8通道	Filling channel	8 channels
生产效率	9000-10000个/小时	Production Efficiency	9000-10000 pcs / hour
料仓容量	约2000个瓶子和盖子	Solid Capacity	About 2000 bottles and caps
流量精度	百分之5以内误差(根据需要灌装的液体粘度会有不同的误差)	Flow accuracy	Within 5%(Error depends on the viscosity of the liquid)
灌装泵	蠕动泵	Filling pump	Peristaltic pump
旋盖扭力	8台伺服控制，扭力可以设置	Torque of Screw Cap	8 servo controls, torque can be set
视觉检测	检测液量，检测异物，检测盖子是否到位，整瓶外观	CCD Detection	Detect liquid volume, foreign matter, and screw status, appearance of bottles
不良品处理	自动剔除	Remove Defective Products	Automatic
编程方式	触摸屏人机界面输入	Programming	Touch Screen Interface Input
气源	0.6Mpa	Gas Source	0.6Mpa
设备尺寸	长2200MM宽2500MM高1950MM(单组)	Machine Size	2200MM* 2500MM* 1950MM(Single)
消费电力	3.7KW	Electric Power Consume	3.7KW
重量	约1200公斤	Machine Weight	About 1200KG

WM-703诊断试剂全自动灌装贴标生产线

WM-703 diagnostic reagent fully automatic labeling production line

产品介绍 ▶

Product Introduction

- 1、本设备针对诊断试剂灌装和旋盖以及贴标工艺研发而成，设备能够实现完全自动化上下料，自动灌装，自动旋盖，自动检测不良品，自动剔除不良品，自动贴标，检测贴标效果，剔除贴标不良品等流程。
- 2、设备全程自动化生产，CCD检测生产状态，不良品设备自动剔除，速度快，效率高、质量稳定，是生产企业非常理想的生产设备。
- 3、操作界面简单明了，不要反复翻转界面设置项目，逻辑符合人性思维，给人舒适、轻松的工作状态。



1. This equipment is developed for diagnostic reagent filling, capping and labeling processes. The equipment can realize automatic loading and unloading, filling, capping, detecting defective products, rejecting defective products, labeling, detecting labeling effect, and rejecting. Processes such as labeling defective products.
2. The equipment uses CCD to detect production status, and defective products can be automatically eliminated. It is fast, efficient, and has stable quality. It is an ideal equipment for manufacturers.
3. The operation interface is simple and clear, giving people a comfortable and relaxed working state.

产品参数 ▶

Product parameters

型号	WM-703	Model	WM-703
灌装通道	2通道	Filling channel	2 Channels
生产效率	3200-3600个/小时	Production Efficiency	3200-3600 pcs/hour
料仓容量	约1000个瓶子和盖子	Solid Capacity	About 100 bottles and caps
流量精度	百分之5以内误差(根据需要灌装的液体粘度会有不同的误差)	Flow accuracy	Within 5%(Error depends on the viscosity of the liquid)
灌装泵	蠕动泵或者柱塞泵(根据精度要求选择)	Filling pump	Peristaltic pump or plunger pump (selected based on accuracy)
旋盖扭力	伺服控制，扭力可以设置	Torque of Screw Cap	servo controls, torque can be set
视觉检测	检测液量，检测异物，检测盖子是否到位，整瓶外观贴标状态，标签内容	CCD Detection	Detect the liquid volume, foreign matter, whether the cap is in place, and the appearance of the bottle
不良品处理	自动剔除	Remove Defective Products	Labeling status, label content.
编程方式	触摸屏人机界面输入	Programming	Automatic
气源	0.6Mpa	Gas Source	Touch screen interface input
设备尺寸	长3700MM宽1900MM高1950MM(单组)	Machine Size	0.6Mpa
消费电力	3.7KW	Electric Power Consume	3700MM*1900MM*1950MM (Single)
重量	约1800公斤	Machine Weight	3.7KW

About 1800KG

WM-704单人份干式化学发光生产线

WM-704 single serving dry chemical luminescence production line

产品介绍 ▶

Product Introduction

- 1、本设备针对单人份干式化学发光产品研发而成，设备能够实现完全自动化上下料，自动灌装，自动封铝膜，自动填充波纤滤纸，自动放置冻干球，自动贴合。自动检测不良品，自动剔除不良品等流程。
- 2、设备生产过程实现完全自动化，速度快，效率高、质量稳定，是生产企业非常理想的生产设备。
- 3、操作界面简单明了，不要反复翻转界面设置项目，逻辑符合人性思维，给人舒适、轻松的工作状态空置集料盒和满料集料盒进行交替更换，操作方便，减少占地空间。

1. This machine is developed for single-serve dry chemical luminescence products. The machine can automatically load and unload, fill, seal aluminum films, place glass fiber filter, place freeze-dried balls, fit, detect defective products, and reject inappropriate products and other processes.
2. The production process is automated, fast, efficient and of stable quality. It is an ideal production equipment for manufacturers.
3. The operation interface is simple and clear, giving people a comfortable and relaxed working state.



产品参数 ▶

Product parameters

型号	WM-704	Model	WM-704
灌装通道	2通道	Filling channel	2 Channels
生产效率	1600-1800个/小时	Production Efficiency	1600-1800 PCS / hour
铝膜材料	卷状, 设备内模切	Aluminum film shape	Rolling
玻纤滤纸	卷状, 设备内模切	glass fiber filter	Rolling
视窗	贴合或者超声契合(根据材料选择)	Window	Adhesive or ultrasonic fit (depending on material selection)
流量精度	百分之3以内误差(根据需要灌装的液体粘度会有不同的误差)	Flow accuracy	Within 3%(Error depends on the viscosity of the liquid)
灌装泵	柱塞泵	Filling pump	plunger pump
热封温度	0-160度(可调节)	Heat-seal temperature	0-160°C (can be adjusted)
视觉检测	由6组CCD视觉检测整个生产流程, 检测液量, 检测异物, 铝膜封口状态检测, 波纤滤纸装入检测, 冻干球装入检测, 贴合视窗膜检测, 外形检测。	CCD Detection	Six sets of CCD visual inspection equipment are used to detect liquid volume, foreign objects, aluminum film sealing status, fiberglass filter paper loading status, freeze-dried ball loading status, adhesion status, and appearance.
不良品处理	自动剔除	Remove Defective Products	Automatic
编程方式	触摸屏人机界面输入	Programming	Touch screen interface input
气源	0.6Mpa	Gas Source	0.6Mpa
设备尺寸	长3700MM宽1200MM高1950MM(单组)	Machine Size	3700MM* 1200MM* 1950MM(Single)
消费电力	5.2KW	Electric Power Consume	5.2KW
重量	约1950公斤	Machine Weight	About 1950KG

WM-720血气液包成型机

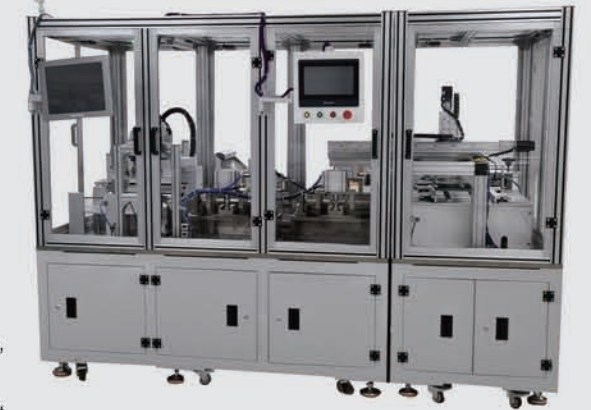
WM-720WM-720 blood gas liquid bag forming machine

产品介绍 ▶

Product Introduction

- 1、本设备针对血气液包注射试剂工艺研发而成，设备能够实现选择程序，不同编号可调节尺寸长度，自动注入三元气体，自动注入液体，自动封膜，自动检测不良品，自动剔除不良品，自动模切成型等流程。
- 2、设备生产过程实现完全自动化，三元气体浓度，设备内温度等设备自动监控，速度快，效率高、质量稳定，是生产企业非常理想的生产设备。
- 3、操作界面简单明了，不要反复翻转界面设置项目，逻辑符合人性思维，给人舒适、轻松的工作状态

1. This machine is developed for the blood gas liquid package injection process. The machine can select the program, adjust the length, automatically inject ternary gas, automatically inject liquid, automatically seal the film, automatically detect defective products, automatically reject defective products, and automatically die-cut.
2. The production process of the equipment is completely automated. Automatically monitor the concentration of ternary gas and the temperature inside the equipment. With fast production speed, high efficiency and stable quality, it is an ideal equipment for manufacturers.
3. The operation interface is simple and clear, giving people a comfortable and relaxed working state.



产品参数 ▶

Product parameters

型号	WM-720	Model	WM-720
注液通道	4通道	Qty of channels	4 channels
生产效率	3000个/小时	Production Efficiency	3000 pcs/ hour
铝膜材料	卷状	Aluminum film shape	Rolling
液包成型	模具成型	Molding method of Bag	Mold forming
流量精度	百分之3以内误差(根据需要灌装的液体粘度会有不同的误差)	Flow accuracy	Within 3%(Error depends on the viscosity of the liquid)
灌装泵	柱塞泵	Filling pump	plunger pump
成型温度	0-160度(可调节)	Temperature	0-160°C (can be adjusted)
三元气体注入	3面成型后4通道, 流量控制。	Gas injection method	3 side forming, 4 channels, flow control.
模切成型	一次4个(模具可更换)	Die cutting forming	4 / time (Can replace the mold)
尾料	自动收集	Tailing	Automatic collection
视觉检测	视觉检测整个生产流程, 检测液量, 检测异物, 膜封口状态检测, 模切尺寸测量	CCD Detection	Detect the entire production process, detect liquid volume, foreign matter, sealing status, and die-cutting size.
不良品处理	自动剔除	Remove Defective Products	Automatic
编程方式	触摸屏人机界面输入	Programming	Touch screen interface input
气源	0.6Mpa	Gas Source	0.6Mpa
设备尺寸	长2700MM宽1200MM高1950MM(单组)	Machine Size	2700MM*1200MM*1950MM (Single)
消费电力	9.2KW	Electric Power Consume	9.2KW
重量	约2250公斤	Machine Weight	About 2250KG

WM-801诊断试纸单人份切割包装生产线

WM-801 diagnostic test strip single serving cutting and packaging production line

产品介绍 ▶

Product Introduction

1、本设备针对血糖试纸，各类诊断试纸等产品需要单独包装功能研发而成，设备实现过程全自动化生产。

2、设备由单片长条自动上料、自动对位裁切、自动剔除边角料。检测不良品，剔除不良品，自动制袋，打印生产批号，模切成型，成品流出。是大规模化生产企业常理想的生产设备。

3、设备整线生产过程由CCD视觉进行监控和检测，包装完成后设备将再次复检。

4、按照客户不同形状包装袋可定制不同模具，切割部分根据实际需求可选择（5片或者10片一板）进行切割。



1. This machine is developed for the independent packaging function of various types of diagnostic test strips, and the equipment can achieve fully automated production.

2. The machine can realize automatic feeding of single strips, automatic alignment and cutting, and automatic removal of leftover materials. Detect defective products, reject defective products, automatically make bags, print production batch numbers, die-cut and forming, and finished products flow out. Ideal equipment for manufacturers.

3. The production process is monitored and inspected by CCD vision, and the machine will be inspected again after packaging is completed.

4. Different molds can be customized according to different packaging, and 5 or 10 pieces per plate can be selected for cutting according to actual needs.

产品参数 ▶

Product parameters

型号	WM-801	Model	WM-801
工作台面行程	双工位交替式	Work Table Route	Dual station alternating type
裁切精度	±0.1mm根据材质不同会有轻微的浮动	Cutting Precision	±0.1mmThere may be slight changes due to different materials
生产效率	85-100片/分钟	Production Efficiency	85-100 sheet/min
料仓容量	300长条	Silo Capacity	300 strips
打印方式	激光打印或者喷墨打印	Printing Way	Laser printing or inkjet printing
封膜方式	热压或者超声波	Sealing Way	Hot pressing or ultrasonic
切割方式	斩切方式	Cutting Way	Cut off
CCD检测	切割完成检测尺寸，毛刺等，打印内容检测，包装外形检测	CCD Detection	Detect size, burrs, printed content, and appearance
铝箔要求	已印刷完成卷状铝箔	Aluminum film requirement	Rolling
复检称精度	0.01克	Scale accuracy	0.01g
编程操作	触摸屏人机界面输入	Programming	Touch screen interface input
机械尺寸	3800MM*1100MM*1950MM	Machine Size	3800MM*1100MM*1950MM
气源	0.6-0.8Mpa (干净气源)	Gas Source	0.6-0.8Mpa (clean gas source)
机械重量	约2500KG	Machine Weight	About 2500KG
消费电力	5.7KW	Electric Power Consume	5.7KW
使用电源	AC220V/50、60HZ	Electric Power	AC220V/50、60HZ

WM-1011电化学试纸印刷电极阻抗检测设备

WM-720WM-720 blood gas liquid bag forming machine

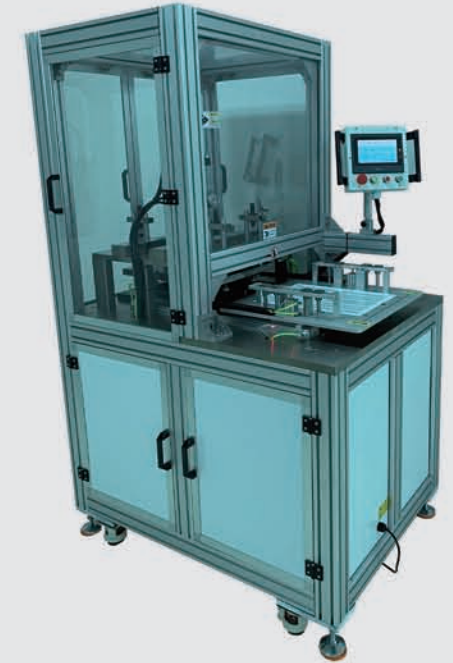
产品介绍 ▶

Product Introduction

1、本设备针对电化学试纸电极印刷工艺需求，进行阻抗全检功能开发而成的设备。

2.设备可定制不同检测通道，提供最高至2000个电极触点接口，并且预留上位机通信接口，自动传输，自动生成文档和表格。

3.可配合巨锐定制上下料和自动标记不良品功能设备，进行不良品自动标记。



1. This machine can perform impedance detection on the electrodes of electrochemical test strip.

2. The machine can be customized with different detection channels, providing up to 2,000 electrode contact interfaces, and has reserved host computer communication interfaces for automatic transmission and generation of documents and forms.

3. It can be used with our company's self-developed loading and unloading equipment and defective product marking equipment to mark defective products.

产品参数 ▶

Product parameters

型号	WM-1011	Model	WM-1011
工作台面宽度	100 mm *100 mm-500 mm*500 mm (按照要求定制)	Work Table Route	100 mm *100 mm-500 mm*500 mm (can be customized)
触点数量	1-2000个 (按照要求定制)	Number of contacts	1-2000 PCS (can be customized)
阻抗值	人工设定 (高于或者低于设定值自动判断不良品)	Impedance value	Manual setting (a value higher or lower than the set value is automatically judged as a defective product)
上位机接口	预留	Upper computer interface	Reserve
自动上下料	预留定制	Automatic loading and unloading	Reserve
自动标记不良品	预留定制	Mark Defective Products	Reserve
编程操作	触摸屏人机界面输入	Programming	Touch screen interface input
设备尺寸	800MM*1200MM*1950MM	Machine Size	800MM*1200MM*1950MM
使用电力	220V50/60HZ.消费电力: 2.0KW	Electric Power	220V50/60HZ. Electric Power Consume: 2.0KW
重量	约220公斤	Machine Weight	About 220KG

WM-1012电化学试纸电流检测设备

WM-1012 Electrochemical test strip current detection machine

产品介绍 ▶

Product Introduction

- 1、本设备针对电化学试纸性能，如电流，生物兼容性，干扰电流检测等品质控制环节和研发工艺需求，开发而成的设备。
- 2.设备可以定制各种性能要求的检测通道，或者采用客户端提供的检测仪器进行定制.设备可提供至500个电极触点接口，并且预留上位机通信接口，自动传输，自动生成文档和表格。
- 3.可配合巨锐定制三坐标加样设备，进行自动加样自动检测。



1. This machine is mainly developed for quality control aspects such as current, biocompatibility, and interference current detection of electrochemical test strips.
2. The machine can be customized with various detection channels, or customized according to the detection instruments provided by the customer. The machine can provide up to 500 electrode contact interfaces, and has reserved communication interfaces for the host computer, which can automatically transmit information, generate documents and sheet.
3. It can be used with our company's three-coordinate sampling equipment for automatic sample loading and testing.

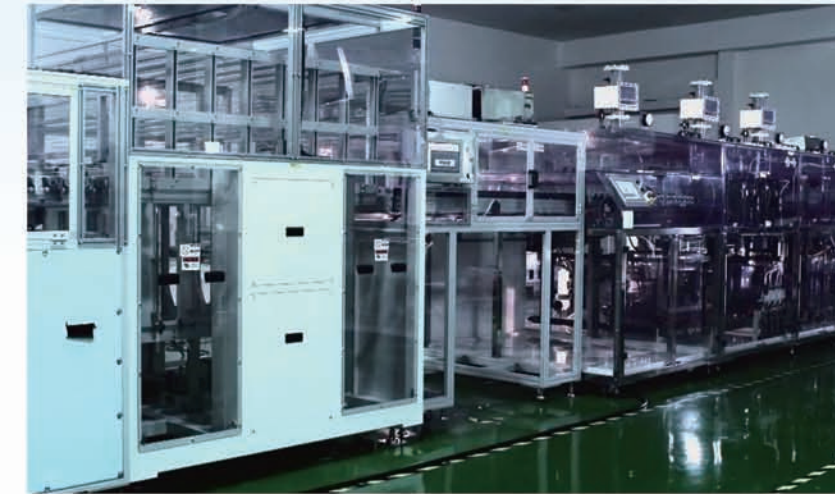
产品参数 ▶

Product parameters

型号	WM-1012	Model	WM-1012
原材料宽度	5-100 mm (按照要求定制)	Raw Material Width	5-100 mm (can be customized)
触点数量	1-500个 (按照要求定制)	Number of contacts	1-500 PCS (can be customized)
上位机接口	预留	Upper computer interface	Reserve
自动加样机构	预留定制	Automatic sampling device	Reserve
编程操作	触摸屏人机界面输入	Programming	Touch screen interface input
设备尺寸	800MM*600MM*1050MM	Machine Size	800MM*600MM*1050MM
使用电力	220V50/60HZ消费电力: 1.0KW	Electric Power	220V50/60HZ
重量	约150公斤	Machine Weight	Electric Power Consume: 1.0KW

一体化生产流水线解决方案

Integrated production line solution





- 1、配合国内外专业设备厂商为客户,提供各类体外诊断产品生产一体化流水线
- 2、提供工装治具、工业精密零部件的设计研发,对现有设备进行改造自动化服务。
- 3、提供自动化流水线提供生产监控系统、对于现场生产的产量均可存储至ERP系统,以及现场显示屏显示实时生产状况、数据等。
- 4、提供国外进口设备的维护以及维修服务。
- 5、提供临床诊断产品生产非标自动化设备。

1. Cooperate with professional manufacturers around the world to provide customers with integrated production lines for various in vitro diagnostic products.
2. Provide services such as design and research and development of tooling fixtures and industrial precision parts, as well as modification of existing machine.
3. Provide a monitoring system for the automated production line, and can store the output in the ERP system. You can also add an on-site display to understand the production status and data in real time.
4. Provide equipment maintenance and repair services.
5. Provide automated production equipment for non-standard clinical diagnostic products.

